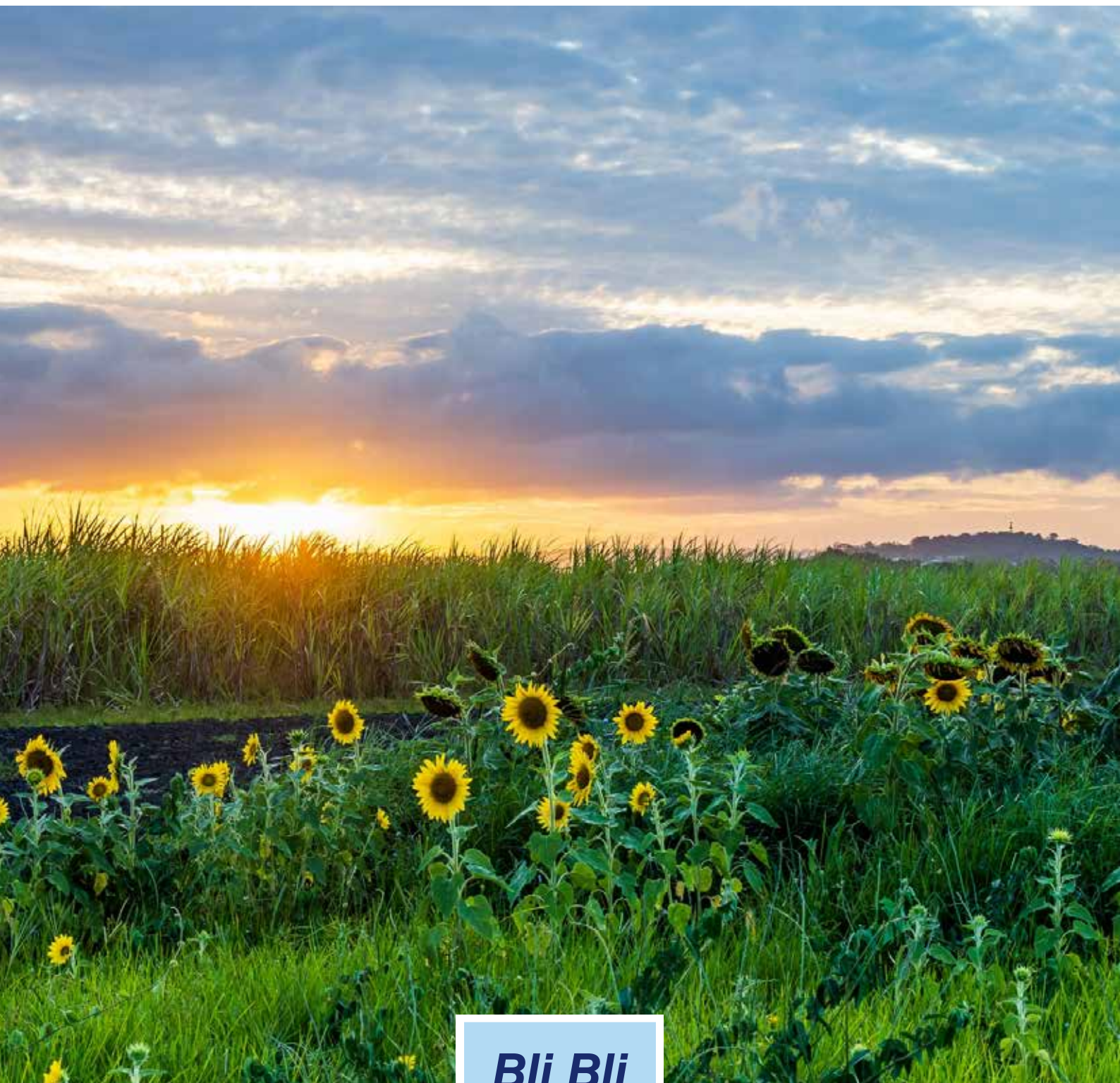


# B L I B L I

BULLETIN

ISSUE 50 | SPRING 2023





# \$0 JOINING FEE

Save \$122\*

- NO LOCK-IN CONTRACTS
- 24/7 ACCESS
- NO HIDDEN FEES



**jetts**  
24 hour fitness



## Bli Bli

"Our River Community"

The Bli Bli Public Hall & Community Association Inc is the parent organisation of Bli Bli's own local Magazine, distributed FREE to Bli Bli and the surrounding district.

PO Box 1, Bli Bli 4560

ADVERTISING  
ads@blibli.qld.au

Editorial contributions welcome  
editor@blibli.qld.au

Bli Bli Public Hall & Community Association Inc Meetings  
7.30 - 9.00pm

Third Tuesday each month  
Bli Bli Public Hall

All Residents are welcome.  
secretary@blibli.qld.au

Hall Bookings & Old Church  
Bookings: 0427 635 558

bookings@blibli.qld.au

Business Number 22132715

Design and Print  
BrandGrowth - 0431 771 059

Front cover image -  
Karen Simpson Photography

*A message from*

## THE BLI BLI COMMUNITY ASSOCIATION

Twelve months on, the Community Garden project is well under way with the area starting to take shape with some great looking garden beds bursting at the seams. As the weather warms there will be plenty of growth and the area will no doubt transform which is very exciting. As part of its growth, they held their first weekend stall onsite which is a great use of the area.

Another exciting initiative was the art show that we held earlier in the year. Well, it is back again to be held on Sunday 22 October. It will be held across the Old Church and Hall with more exhibitors, so make sure you keep this date saved and come along and support these local artists.

A regular topic at our Community Meetings is local crime and so on Tuesday 17 October we will hold a crime forum in place of our regular monthly meeting. Dan Purdie MP will be hosting the night together with several invited guests. So, this will be an important meeting as it is becoming an increasingly frustrating issue that we all must deal with.

We look forward to the opening of the Bli Bli Hotel which should be up and running by the time of our next edition. Now that the scaffolding has been removed and with the images of the landscaping at the front of the building, it will be a wonderful addition to our area.

Finally, thank you to Cr Maria Suarez for her support of the Community Gardens project with some monies from her discretionary fund and to Council for their continued support with the Community Carols with \$2000 received already.

The Bli Bli Community Association acknowledges the continued support received from the Sunshine Coast Council by its grants program.



**BrandGrowth**  
CREATIVE DESIGN STUDIO

## Looking for a new LOGO or WEBSITE?

Talk to Ben - your full-service logo, brand and graphic design agency in Bli Bli

Ben Mathieson | Ph: 0431 771 059 | brandgrowth.com.au


Scan to join today!



308-312 David Low Way,  
Bli Bli, QLD 4560  
(07) 5373 7851







**Dan PURDIE MP**  
Member for **Ninderry**  
Shadow Minister for Police and Counter Terrorism  
Shadow Minister for Corrective Services

📍 11 Heathfield Road, Coolum Beach QLD 4573 📧 PO Box 989, Coolum QLD 4573  
☎ (07) 5406 7900 ✉ ninderry@parliament.qld.gov.au 🌐 danpurdie.com.au  
📱 DanPurdieMP 📺 @DanPurdieMP 📷 danpurdie\_mp

## An update from your LOCAL STATE MEMBER, DAN PURDIE MEMBER FOR NINDERRY

I'm pleased to report we've had some success with our ongoing advocacy to improve safety and congestion in Bli Bli, with \$600,000 in funding allocated in the recent State Budget to start looking at options.

At a recent meeting with TMR officials, I was told the money will be used for initial planning on how to best address the issue of increased local traffic on major routes in and out of Bli Bli, including David Low Way, Nambour Bli Bli Road and Willis Road.

At this stage, there's no options on the table – the critical first step is an analysis to determine possible solutions to reduce congestion and improve connectivity. At this point, I expect there will be consultation with the community, however at this stage, the work that will be undertaken over the next 18 months-two years will be the preliminary investigations.

I'll certainly be keeping a close eye on it and look forward to keeping the community updated. Locals have told me that congestion and better pedestrian access are among the top local priorities, so this is a positive step forward.

In other welcome news, we've secured an additional \$800,000 as part of the ongoing investigations into the upgrade of Bli Bli bridge. Last year we welcomed the initial \$800,000 in funding, so this new allocation, also announced in the State Budget, will bring the total to \$1.6million.

I've had feedback from locals who are concerned that nothing seems to be happening, but TMR have assured me this is a major project with the funds committed over the next three years.

If at any stage you do have concerns, please don't hesitate to get in touch.

Finally, an update on our petition to improve pedestrian safety. Unfortunately, the petition we circulated was signed by only 188 locals, which was a disappointing result. Despite this, TMR have committed to looking at some short-term solutions, and I am waiting to hear the outcomes from the Active Transport Committee, which was going to look at it.

As always, if you have any local issues you would like to raise, please don't hesitate to get in touch.

*I look forward to hearing from you soon.*

**Dan Purdie MP**  
Member for Ninderry



*Congratulations to Bli Bli local Sharon Burton, who recently received a Certificate of Service for 40 years as a JP, which is a very impressive achievement!*



**Councillor Maria Suarez**  
Division 9  
Environment and Liveability Portfolio

Phone: 07 5475 9810 Mobile: 0437 794 703  
Email: maria.suarez@sunshinecoast.qld.gov.au  
Mail: Locked Bag 72 Sunshine Coast Mail Centre Qld 4560  
[sunshinecoast.qld.gov.au](http://sunshinecoast.qld.gov.au)

**Sunshine Coast COUNCIL**  
Our region. Healthy. Smart. Creative.

## A word from CR MARIA SUAREZ DIVISION 9 - SUNSHINE COAST COUNCIL

### BLUE HEART SUNSHINE COAST ON SHOW

It was a pleasure to attend the Asia Pacific Blue Carbon Workshop in early August, along with 80 guests from across the Asia Pacific.

The Nature Conservancy organised the workshop as an opportunity for us all to share what we have learnt on our blue carbon journey so far.

Blue Carbon is carbon that is stored in marine and coastal ecosystems and includes carbon stored in the bodies of plants and animals as well in debris and soil.

Blue Carbon 'farming' provides an economic opportunity for council and Blue Heart private landholders in the future.

Council is at the beginning of its blue carbon farming journey. We are using a grant received in 2022 to restore our publicly owned land in the Blue Heart on the Maroochy River and try and understand the barriers, challenges and opportunities that go along with blue carbon farming so we can share our learnings with private landholders in the Blue Heart area.

By doing this, we hope to upscale the project, protect more of the floodplain in the future and importantly, provide a pathway for an alternative source of income for these landholders.

### SHARE YOUR BLUE HEART STORY

We are a mix of government organisations and individuals who own property or live in the Blue Heart.

As neighbours, we are learning together and sharing information about how we use and manage our places. I encourage you to share your Blue Heart story with your neighbours at [haveyoursay.sunshinecoast.qld.gov.au](http://haveyoursay.sunshinecoast.qld.gov.au).

Here are some ideas: Land use – have you investigated alternative land use such as carbon farming, offsets or alternative agriculture? Land management – how do you manage pest species, fire risk, tidal inundation, flooding and other land management topics of interest? Land transition – changes you have noticed over time? People living, working and playing in the Blue Heart – what are your favourite places in the Blue Heart and why?

By sharing information, we hope to get the best outcome for the wetlands and people connected with the Blue Heart.

### BE READY FOR BUSHFIRE SEASON

It's August - which means Sunshine Coast's bushfire season is here. I encourage you to be ready by understanding fire weather and how to prepare and protect family and property.

The Sunshine Coast Council Disaster Management team want you to know that bushfires don't just occur in the bush. They can impact anyone, anywhere on the Sunshine Coast.

There are a few steps you need to take to make sure you're prepared.

Find out at [www.oursc.com.au/council/are-you-ready-for-bushfire-season](http://www.oursc.com.au/council/are-you-ready-for-bushfire-season)

### DEVELOPMENT INFORMATION

It's important residents know about development in their area and Council have a fantastic online tool called Developmenti, where you can access information and receive alerts about current applications. To learn how to use the site and access the information visit <https://www.sunshinecoast.qld.gov.au/Development/Development-Tools-and-Guidelines/Development-i>

As always, please contact council direct for any service requests such as road hazards, graffiti, dumped rubbish, parking, parks, potholes, roads, trees and waste collections. Contact details or service request forms are available at [www.sunshinecoast.qld.gov.au](http://www.sunshinecoast.qld.gov.au) or call 5475 7272.

If you have any other issues or suggestions to discuss, please contact me on 5475 9810 or [maria.suarez@sunshinecoast.qld.gov.au](mailto:maria.suarez@sunshinecoast.qld.gov.au).

**Cr. Maria Suarez**  
Division 9 – Sunshine Coast Council

**IT'S IMPORTANT RESIDENTS KNOW ABOUT DEVELOPMENT IN THEIR AREA AND COUNCIL HAVE A FANTASTIC ONLINE TOOL CALLED DEVELOPMENTI, WHERE YOU CAN ACCESS INFORMATION AND RECEIVE ALERTS ABOUT CURRENT APPLICATIONS. TO LEARN HOW TO USE THE SITE AND ACCESS THE INFORMATION VISIT [www.sunshinecoast.qld.gov.au/Development/Development-Tools-and-Guidelines/Development-i](http://www.sunshinecoast.qld.gov.au/Development/Development-Tools-and-Guidelines/Development-i)**



CASSANDRA LEHMANN PH: 0498 229 394  
HELLO@LEHMANNDESIGN.COM.AU



**INTERIOR DESIGN**

- COMMERCIAL
- FITOUT DESIGN
- RESIDENTIAL
- RENOVATIONS
- DRAFTING SERVICES





**Ted O'BRIEN MP**  
Federal Member for **Fairfax**

📍 17 Southern Drive, Maroochydore QLD 4558 📞 07 5479 2800  
✉️ ted.obrien.mp@aph.gov.au 🌐 tedobrien.com.au 📺 TedOBrienMP

*A message from*  
**TED O'BRIEN -  
FEDERAL MEMBER FOR FAIRFAX**

Phone: 5479 2800 Email: ted.obrien.mp@aph.gov.au Web: www.tedobrien.com.au  
Mail: PO Box 1978, Maroochydore QLD 4558



**WOMEN'S SPORT INSPIRES POLICY**

This season, it's the women who are winning. We have seen the Australian women's national cricket team retain the Ashes trophy, the Diamonds take home the Netball World Cup and the Matildas win the heart of the nation with their performance in the FIFA World Cup.

Despite the interest in women's sport, too many young girls are still being forced to change in the carpark of their sporting club.

To encourage more participation, the Coalition has announced a plan to keep the momentum building in female sports by committing \$250 million towards community sporting infrastructure.

This package is aimed at improving sporting standards across our country to benefit grassroots programs who currently operate with poor change room facilities and substandard sporting facilities.

I encourage local sporting groups interested in taking advantage of this funding to contact my office for further information.

**BACKPACKER TAX**

I was recently approached by Bli Bli locals, Robyn and Mark, owners of Fraser Island Adventure Tours who raised their concerns about the impact of the increased cost of working holiday visas on their business.

Labor has hiked the cost of the working holiday 'backpacker' visa, making it the most expensive visa of its kind in the world. This will also impact farmers who rely on backpackers for seasonal work.

Backpackers are part of a suite of people-to-people links that we have with around 40 different countries in the world, allowing young people to travel throughout Australia and also undertake part-time work and study.

They are the ones who serve us in cafes, wait on us in restaurants and pick our fruit and vegies. In horticulture alone, backpackers represent around 80% of the workforce and contribute \$3 billion to the Australian economy every year.

I recently raised this issue in Parliament and voiced my concern about the impact this will have on our economy.

**LISTENING TO LOCALS**

As part of my Winter Road Trip, I have been out and about across the Fairfax electorate listening to locals.

Not surprisingly, two of the most common issues raised were the cost of living and housing affordability.

Australians are facing real hardship with rising mortgage payments, rising prices at the checkout and rising energy bills with families being hit hard.

Taming inflation must be the Labor Government's priority, but unfortunately this is not the case.

**ENERGY SECURITY = NATIONAL SECURITY**

I am concerned that the Albanese Labor Government's unrealistic and untested 82% renewables target has left Australia vulnerable to cyber-attacks.

With almost 60% of installed smart inverters being supplied by Chinese manufacturers, which are bound by China's National Intelligence Laws, this should be of deep concern to our country.

Providing affordable and reliable energy that is free from foreign interference should be a first order priority of government. That's why I recently called on the Federal Government to urgently review this situation.

**SUNSHINE COAST VETERAN WELLBEING CENTRE**

Recently I invited representatives from local veteran organisations to meet with Shadow Minister for Veteran Affairs Barnaby Joyce to discuss how to provide better support for ex-service personnel in our community.

Here on the Sunshine Coast we have Australia's second largest veteran population which is why Member for Fisher Andrew Wallace MP and I are calling for critical funding to be reinstated for a Veteran Wellbeing Centre to be established here in our community.



It has been a busy time at our 11 Progress Road, Maroochydore Men's Shed.

We had a visit from a professional photographer who specializes in photographing celebrities. On our big screen he showed about 70 shots of the "rich and famous". The clarity and angles were amazing.

Speaking of photography our own group set off for Coolool in the early hours to photograph the sun rise over the ocean. Excellent results from a talented bunch of enthusiasts.

A full house of about 100 members and partners attended our "Christmas in July" lunch. Catering for the main meal was looked after by one of our own, an accomplished chef. The dessert was provided by our neighbors "Urban Angels" who do such a marvelous job feeding the homeless.

Our Guest Speakers have been many and varied. A psychologist from SCUH spoke to us on the benefits of humour to improve quality of life as we age. No shortage of humour in our Shed although it helps to be broad minded.

New members are invited to give a short talk on their background, work, family and so on. Some of their life experiences are unusual and surprising.

Our membership has reached 150. We are open from 8 a.m. to 12 noon Tuesdays to Fridays.

For further information please contact Ian Mackay on 0407898430 or visit our website.





## Act now, don't miss out on your Outdoor Blinds for Summer!

We have a huge range to choose so you can enjoy your outdoor entertainment area.







**DARREN'S**  
BLINDS / SHUTTERS / CURTAINS  
*too easy*

Supply and installation of premium blinds, shutters, curtains and awnings to the Sunshine Coast. Free in-home measure and quote available.

**0476 327 736**  
[www.darrensblindsshutterscurtains.com](http://www.darrensblindsshutterscurtains.com)





## MISSION STATEMENT

Bli Bli State School inspires children to confidently contribute to our dynamic world through strong foundations of commitment, creativity, character and community.



## A message from the Principal

Bli Bli State School is a strong school of choice in our local area. Our staff, students and community continue to shine. As a school we are committed to offering our students a broad range of experiences to support their growth as academic and social learners. We ensure that children get the opportunity to engage in a number of quality curriculum and extra curriculum activities.

The list is extensive, but here are just a few:

- ✓ **Music** – in addition to our weekly class lessons students have the opportunity to participate in choirs, small group vocals, guitar lessons, as well as strings and brass/woodwind instruction from our amazing instrumental teachers.
- ✓ **Physical education** – students participate in weekly lessons, as well as being given opportunities to participate in lunchtime sports including touch football, basketball and soccer. Children attend gala days and travel to other schools/ areas to play a range of sports including football, and can try out to be part of our district and regional teams.
- ✓ **Environmental** – students can participate in a range of activities that support sustainability, recycling and caring for our environment through our gardening program and bush tucker garden development,
- ✓ **Technology and Arts** – our school employs a fulltime teacher who operates our STEAM program, offering a range of lessons to each of our classes. This teacher also helps extend our teacher's professional learning in the use of technology and operates a range of clubs to extend our student's innovation and creative use of technology tools.

✓ **Social support** – we have a Guidance Officer, Chaplains, and a psychologist at our school to support our students and families. We also work closely with many of our community support agencies and services. We even have Story Dogs visiting every week.

All this happens on top of our strong focus on literacy and numeracy across our classrooms every day. Our students benefit from strong extension work as well as the provision of intervention to support those who need some extra help.

This doesn't include the range of services offered by our wonderful P and C, and community groups who utilise our great facilities. Our P and C operate our Outside School Hours Care, our canteen and our uniform shop. The profits made from these businesses are directed back into our school, to help us continue to provide amazing resources and support for our students. Wait until you see our new Prep playground!

We are very lucky to have the amazing students, staff and families that we have in our school community and love the culture of learning, friendships and support that we have evolved at our school.

Feel free to visit us if you would like to learn more about who we are and the endless opportunities we offer.

**Monique Pfingst**  
Principal

## The right choice for Prep in 2024...

### Enrol at Bli Bli State School



Prep at Bli Bli State School - Access to quality focused teaching, a whole school structured phonics program, a strong emphasis on Literacy and Numeracy, air conditioned classrooms, a designated Prep precinct, a full-time teacher's aide in each class and specialised staff working across the year level.

- **Enrolment packs** are available NOW - copies are available at your kindy or from our school office.
- Book into a **School Tour**.
- Book into our **Prep orientation days and interviews** which **start October 16**. Orientation is a very important part of your enrolment.
- If your child has specialised needs, contact us - we can work even more closely with your kindy.

**We look forward to your family joining our school community.**



Enrolment enquiry email:  
[enrol@bllibliss.eq.edu.au](mailto:enrol@bllibliss.eq.edu.au)

Book the family on a school tour:



Book your child in for orientation:



Book your enrolment interview:



# LET'S CELEBRATE!



In June, we saw 177 students take to the stage for our Bi-Annual musical 'Where The Heart Is'. Over two performance nights, our students sang, acted and danced their hearts out to rave reviews from our packed audiences.

In August, our string ensemble, concert band, Year 6 Instrumental Ensemble, Instrumental Trio and Small Vocal Group students competed at the Sunshine Coast Junior Eisteddfod. All students who entered played or sang their very best and all groups received excellent comments from the adjudicators and organisers. Congratulations to:

- Macey, Taliah and Kyeesha – 2nd place – Primary Age Instrumental Trio**
- Concert Band – 1st place – Primary Age Concert Band**
- Belle Voce – 1st place – Primary Age Small Vocal Ensemble**
- Piccolos – Highly Commended – Primary Age Small Vocal Ensemble.**

Congratulations to our instrumental music students who have been selected to attend the Sunshine Coast Instrumental Music Excellence Program in August. Well done to Macey and Taliah, representing Bli Bli in the Advanced Program, and Esther, Alicia, Jerald, Sienna, Leo, Hannah, Harvey, Ethan and Mady, representing Bli Bli in the Intermediate Program.







Bli Bli Dental

P: 5448 4811  
Level 3, Building 2,  
310 David Low Way, Bli Bli  
reception@blliblidental.com.au  
www.blliblidental.com.au

*New patients welcome*

**Child Dental Benefit Scheme**  
Bulk Billed Here

Contact us to check eligibility

**10% SENIORS DISCOUNT\***



Quality - Reliable - Efficient  
**AML**  
**PLUMBING & GAS**

*Sunshine Coast & Surrounding Area*

**LOCALLY OWNED AND OPERATED**

DOMESTIC - COMMERCIAL - INDUSTRIAL

- General Plumbing and Gas Maintenance
- After Hours and Emergency Service
- Senior Discounts
- Renovations
- Blocked Drains and Burst Pipes
- Taps and Toilets
- Gas Compliance Certificates
- Hot Water Systems

**SPECIALISED SERVICES**

- Backflow Prevention Devices
- Thermostatic Mixing Valves
- Emergency Eye Washes and Showers
- Drain Camera and Locator

Call **Mitch** Today  
**0407 966 665**

**LIKE US ON FACEBOOK & CHECK OUT OUR WORK**



Master Plumbers'  
Association  
of Queensland  
Member

QBCC Licence  
No. 15037335  
No. 1293749  
Email : info@amplumbing.com.au  
Website : www.amplumbing.com.au  
ABN : 11 615 207 791

**SAVE THE DATE**

# Local Photography & Art Exhibition

**Sunday 22nd October 9am - 2pm**  
**Bli Bli Hall & Bli Bli Church**

**Karen Simpson's Photography** - Canvas & Framed Prints, Cards, Matt Prints, Postcards.

2024 Bli Bli Calendar Launch, Calendars will be available on the day.

**Cam Minto** - Local Artist. Will have a lovely range of Watercolour Prints available.

**Helen Minto** - My Billy Lids & Their Friends - Creative Toys & Dolls, all handmade by Helen.

**Ursula Kelly** - Various Art Works on Canvas, using Acrylic Mediums & Greeting Cards.

**Trevor Renn** - Started with Pencil Portraits & has progressed to Acrylic Paintings. He has done a number of Commissions of his work over the last 18 months of his work.

**Victoria Fitzpatrick** - Paintings

~ COFFEE VAN ONSITE ~

**Bli Bli**  
"Our River Community"



**BLI BLI COMMUNITY**

# Christmas Carols

**FOOD FIREWORKS FUN!**

**FRIDAY 1 DECEMBER**  
at Bli Bli State School

- Food • Santa • Glow Products • Lob-a-Choc
- Carols and stage entertainment
- Firework Spectacular



# NAMBOUR CHRISTIAN COLLEGE

**Twilight Tour**  
10 October 4:15pm



At NCC, we offer students an enriching and nurturing learning environment that focuses on cultivating character and fostering a sense of community in each student. Our extensive programs and opportunities go beyond the classroom empowering your child to develop into confident, compassionate, and well-rounded individuals, equipped to make a positive impact on the world. With an education at NCC, your child will be prepared to embrace their future with purpose and excellence.

**BOOK NOW** [www.ncc.qld.edu.au](http://www.ncc.qld.edu.au)

2 McKenzie Road, Woombye Qld 4559  
07 5451 3333 | [enrolments@ncc.qld.edu.au](mailto:enrolments@ncc.qld.edu.au)



# You're Welcome at the MAROOCHY RIVER GOLF CLUB

There's nothing better than sitting down for a great meal with family and friends, watching the sunset. The terraced deck at Maroochy River Golf Club (MRGC) is the place to be, either after golf or having a relaxing meal in a family friendly atmosphere. It is great to see and hear of so many locals utilising the deck area with expansive views to Mount Coolum. Bli Bli locals and nearby residents are always welcome to enjoy the club facilities.

MRGC was awarded one of the top 100 Golf Course in Australia. So if you're planning a round of golf on one of Australia's best courses, call the Pro Shop on (07) 5457 0900.

Here's some of what else we offer for members and guests.

## CANE CUTTERS BAR & BISTRO

If you are thinking of having a party, (and we are currently catering for every type of party – children's & adult birthdays, special occasions, work parties), the Cane Cutters Catering crew can offer all sorts of options for you.

We have 17 taps of different beers, including a few local craft beer favourites. Families and friends love coming out in the fresh air, sharing some value time, having some drinks and staying for a pizza or snack. Guests enjoy the Cane Cutters Bar & Bistro facilities and taking in the great views of the golf course to the North, with Mount Coolum on the horizon, as the sunset glistens across the water in a friendly family atmosphere.

The Friday night raffles are proving very popular, with raffle prizes up for grabs from 7pm. These include meat trays, breakfast trays, food and beverage vouchers and mini golf vouchers. After the raffles, the membership draw starts, where members who are present have the chance to win thousands of dollars. The Courtesy Bus also runs on Fridays from 5pm to bring patrons to and from the club.

With easy parking the Cane Cutters Bar & Bistro has a gaming room, and is open every day for coffee & cake. We also have mouth-watering lunches and dinner with a new great menu, plus a new head Chef!

## MINI GOLF

The Maroochy River Mini Golf course (adjacent to the Clubhouse) is very popular with families and groups who play 18 holes of mini golf with specially designed putters and balls.

For those who are still not sure what mini golf is, it is a supercharged version of the old 'putt putt' game but without clowns faces and animal obstacles etc... Instead, it has classy, landscaped humps & hollows, delightful water features and pretend sand traps. Overhead

*Maroochy River Golf Club – Sit back and relax on the terrace deck of the Cane Cutters Bar & Bistro...*

lighting for the evening players and great background music make the mini golf so much better! There are 18 holes with two challenge levels to choose from.... An easy one for relaxed fun players and a harder one for players who are looking for a bit of a challenge.

The mini golf course is open from 9.00am every day until late, 7 days a week. Game costs are just \$17 for adults and \$12 for children. A family of 4 is only \$45.

Thursdays is Mini Golf Putt 'n Parmi for lunch or dinner. Get the family together or call on your mates, and let's play Mini Golf. Enjoy a beautiful meal at the Cane Cutters Bar & Bistro before or after you hit the course, all for only \$35.00 per person. Who doesn't love a good Parmigiana with family & friends? Here's what is included - 18 holes of Mini Golf, Chicken Parmi, Chips & Salad on Thursdays only.

A special Friday Family Mini Golf & Pizza Deal is only \$70 and provides Mini Golf for 2 adults and 2 children (extra children are only \$5 each - max 2 extra), a 10-inch pizza, bowl of hot chips and jug of Schweppes soft drink! It's a great thing to do with the family before the raffles start.

There is also a full-length driving range open every day and some evenings, not to mention 18 holes of championship golf. Bring your clubs, bring your family, it's all here at MRGC.

For table reservations or to book the Courtesy Bus call Reception on 5373 1000. Table bookings are recommended (particularly on Friday nights) so please email bookings@maroochyrivergolfclub.com.au. For more information on club facilities, golf or mini golf, go to maroochyrivergolfclub.com.au.

**Bli Bli and nearby residents are always welcome. Become a social member for just \$5 and receive club discounts at the Cane Cutters Bar & Bistro. We hope to see you soon....**



# FAMILY FRIENDLY FUN



- New Menu and New Head Chef
- Enjoy magnificent views
- Family friendly atmosphere
- Friday Night Raffles & Members Draw
- 17 Taps of Beer including Local Craft Favourites



- Adults: \$17.00 each
  - Child: \$12.00 each (<18 years of age)
  - Family Pass: \$45.00 (2A+2C)
  - Fun for the whole family
  - Open 7 days - 9am until late
  - Great food and drinks available
  - Family Putt n Pizza Deal: \$70.00
- visit [maroochyriverminigolf.com.au](http://maroochyriverminigolf.com.au)

Let's Play

admin@maroochyrivergolfclub.com.au [www.maroochyrivergolfclub.com.au](http://www.maroochyrivergolfclub.com.au)

374 David Low Way, Bli Bli Qld. 4560 (07) 5373 1000



WHITE'S 

# GOLD LOTTO

WILL BE BACK

Monday 18 September 2023



Official Home of  
Australia's Lotteries



\* Subject to the fit out project staying on track

GET ALL YOUR

Grocery & Lotto needs  
in the one place.

WHITE'S GROCERS:

BLI BLI | MT COOLUM | MOOLOOLAH | PEREGIAN BEACH | BARINGA | FOREST GLEN

[www.whitesgrocers.com.au](http://www.whitesgrocers.com.au)



# BLI BLI HOTEL

More details about a long-awaited hotel, including likely food offerings, have been revealed ahead of its expected opening within the next few months.

A modern bistro with diverse Australian flavours and bar that extends to a Mediterranean-inspired rooftop terrace are just some of the features unveiled on the Bli Bli Hotel, which is on track to open in November.

The bistro adjoins a terrace with an open-air retractable roof. The decor nods towards the Australian bush, the Mediterranean and the Sonoran Desert.

The hotel spans across three levels and includes a kids' play area adjacent to the bistro, sports bar, gaming lounge and bar, and a lush tropical garden-style events space. In the centre of the space sits a 4m pink blossom tree next to the private dining table.

The new venue is the latest initiative for the partnership of Scott Armstrong, Richard Deery and their families, who have a long-standing history of hospitality in South-East Queensland.

They jointly own Baringa Tavern on the Sunshine Coast, while the Armstrongs own and operate Parklands Tavern, Brightwater Hotel and The Lakehouse Sunshine Coast.

Mr Deery and his family own the iconic Story Bridge Hotel, as well as the Woodford Hotel.

Mr Armstrong said the new hotel was something they could be proud of delivering to the Bli Bli community.

An artist's impression of the 4m pink blossom tree next to a private dining table.

"We are thrilled to elevate the offering for Bli Bli, invigorating the social and entertainment landscape with a truly community-focused pub," he said.

"The residents here have been waiting for this venue and we are excited to announce that the launch is now just around the corner."

"As locals ourselves, we have taken extra care to ensure that this venue provides the best possible experience in terms of food, service and entertainment.

"We're also excited to offer new employment opportunities for people in the area and bring additional visitation from the Brisbane drive market and holidaymakers in Noosa."

An artist's impression of a function space at the hotel, which is set to launch 'in late spring'.

Designer Diana Challinor, responsible for all the group's venues, designed the Bli Bli Hotel with palettes of terracotta, limewash, sage blues, pinks and peaches.

Bespoke decor and furnishings will be used throughout, with glazed tiles, hand-blown glass chandeliers and hand-printed Australian bush wallpaper.

The hotel will have an eclectic style menu, curated by group executive chef Damien Grimes.

Mr Grimes draws inspiration from the diversity of Australian flavours using high-quality ingredients sourced from local suppliers.

With a focus on lighter, vegetable-forward options to suit the modern Australian life, the kitchen's centrepiece will be a live-fire grill.



Editorial by: [www.sunshinecoastnews.com.au](http://www.sunshinecoastnews.com.au)

 shanahan family law | care listen results

[shanahanfamilylaw.com.au](http://shanahanfamilylaw.com.au) | 07 5408 4470

At Shanahan Family Law we provide our Bli Bli clients 5-Star service and a cost-effective way to resolve family law matters. We focus on out of court resolution. Visit [shanahanfamilylaw.com.au](http://shanahanfamilylaw.com.au), for our tips on how to choose the best family lawyer.



# BUYING NOW

**GOLD JEWELRY & GOLD COINS COINS: CROWNS, 1966 ROUNDS, FLORINS, SHILLING, OTHER SILVER COINS**

Broken or unwanted jewellery or coins sitting in a drawer?

Are you no longer collecting?

Are the family not interested?

Would the money be of more use?

### GOLD COINS

- Australian \$200 Gold Coins
- Sovereigns
- Half sovereigns
- World proof coins and sets
- Commemorative coins
- Gold Coins: mounted, holed, or worn
- Gold medals and fobs
- All other world gold coins



### WATCHES

- All Rolex watches (including Submariner, Oyster, Daydate, and Datejust)
- All Omega (including Seamaster & Constellation)
- Tudor & Breitling
- Mechanical (automatic & wind up)
- Gold and silver pocket watches
- Military pocket watches
- No quartz / battery watches



### SILVER COINS

- Australian - Crowns, Florins, Shillings, Six Pences, Three Pences, 1966 50 cent rounds
- South Africa, USA & Canada
- NZ, Great Britain, Fiji
- New Guinea Shillings
- Misc Silver Coins
- All Other World silver coins



### GOLD JEWELRY

- Gold chains
- Gold bracelets
- Gold necklaces
- Worn & broken gold jewelry
- Gold rings
- Bullion bars
- Nuggets & alluvial gold
- Gold earrings



### WORLD/AUSTRALIAN COINS

- All world coins
- Collection and accumulation
- Error and mis-strikes
- Proof sets and singles
- Trade tokens
- Discount and special purpose tokens



### JEWELRY

- Rings, brooches, pearls
- Pendants and sovereign cases
- Watch chains & lockets
- Gold cuff links
- Bracelets & bangles
- Necklaces and all broken jewelry



CASH PAID. I COME TO YOU.  
RING BRIAN ON 0401 379 401



## PERSONAL AND BUSINESS ASSISTANCE YOU CAN COUNT ON

- Commercial Dealings
- Business Transactions
- Property Law & Conveyancing
- Wills, Estates & Succession Planning

RESIDENTS OF BLI BLI AND INVOLVED IN THE LOCAL COMMUNITY

PHONE: 5443 5666  
EMAIL: info@bakerslawyers.com  
www.bakerslawyers.com



## Taps Toilets Plumbing Services

Jamie Younger  
Plumber

Phone: 0404 030 796  
PO BOX 143, Bli Bli QLD 4560  
Email: tapsntoiletsplumber@bigpond.com qbec 1230307

TAPS | TOILETS | HOT WATER UNITS | BLOCKED DRAINS



Accounting & Taxation  
Business Services  
Cloud Bookkeeping

Reiter Accounting Solutions is dedicated to help Small & Medium-Sized Businesses to succeed.

Call 0435 515 910  
info@reiteras.com.au  
www.reiteras.com.au

## YOUNGS ELECTRICAL CONTRACTING

## Electrical & Airconditioning



New Homes  
Renovations  
TV & Data  
Hot Water Repairs  
Free Quotes



0418 275 429  
Based in Bli Bli



# PRINCIPAL'S PONDERINGS

The third term of the year is quickly coming to an end for the staff and students at Good Sams. The term has been one filled with excellent learning and teaching opportunities, the first ever College musical, numerous sporting opportunities, eisteddfods, facility tours and much, much more. Our Year 10 students completed their SET planning with their parents as they map their senior pathway. Opportunities abound for these young people where they can explore academic, vocational, trade and other experiences to engage them in senior schooling. Our Year 11 cohort are preparing for their first formal exam block, while at the same time exploring student leadership opportunities for their senior year.

Our building program is finally coming to an end with all new facilities to be completed for the beginning of next term. Our new Resource Centre will be a state-of-the-art complex enabling all students from prep to Year 12 access to world class library, technology and support services. The senior classroom block is already being enjoyed by the students and staff are looking forward to the refurbished staff facilities. As soon as this is complete, we commence the process for our Stage 4 building program, with the highlight being a purpose-built senior area. I look forward to bringing the design of this exciting building to our community in the near future.

In this edition, one of our amazing Vocational Education courses is highlighted, as are the exploits of our young scientists during science week. Our inaugural musical was a roaring success as over 140 students hit the stage at "The J" to perform 'The Little Mermaid' to three sold out audiences. Finally we celebrated Book Week in fine style with Prep to Year 11 students involved in our annual parade. I hope you enjoy the reports of these four outstanding College events.

There are still some vacancies at the College for Years 7 to 12 for 2024 and waiting lists established for Prep to Year 6 classes. I strongly encourage families to complete an online application for enrolment form for an opportunity to join our community in the future.

**Greg Myers**  
Principal



## CERTIFICATE II IN HOSPITALITY

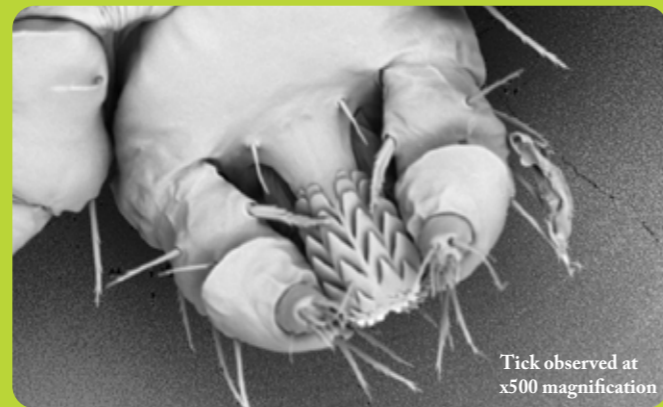
Good Sam's is Gateway to Industry School for Tourism and Hospitality. Our students have access to amazing vocational experiences and recently visited the renowned Sum Yung Guys restaurant. This hands-on experience not only exposed them to the inner workings of a thriving culinary establishment but also provided invaluable insights into the art of fusion cuisine and customer-centric service. Under the expert guidance of Mrs Rachael Beckett, our students continue to hone their practical skills and gain a comprehensive understanding of the dynamic hospitality industry.



## SCIENCE WEEK

Science Week 2023 at Good Samaritan Catholic College was a whirlwind of exhilarating exploration and hands-on discovery. The campus buzzed with the energy of eager students diving into the captivating realms of science. Electron microscopes transported them into the hidden world of the infinitesimally small, revealing intricate details that lie beyond the naked eye. In another corner, students nurtured a fascination for geology as they meticulously grew vibrant crystals, each unique in its crystalline structure.

The excitement reached its peak with the creation of solar-powered robots and cars, a testament to the marriage of science and sustainable technology. Amidst the controlled chaos, controlled chemical reactions were harnessed to spectacular effect, as students huddled around, witnessing balloons expanding through chemical wizardry. Science Week 2023 ignited a spark of curiosity, leaving a lasting impression of the boundless wonders that scientific exploration unveils at Good Sams.



Tick observed at x500 magnification

## BOOK WEEK

At Good Samaritan, we believe reading is the foundation of students' intellectual growth, creativity, and empathy, allowing them to explore diverse perspectives and worlds. During Book Week we come together as a school community to celebrate our love of reading. Our annual Book Week parade was a roaring success this year, and it was great to see so many students and staff involved and celebrating their love of books.



## MUSICAL

The inaugural musical production, The Little Mermaid, presented by Good Samaritan Catholic College, captivated audiences over the weekend. This enchanting performance proved to be a resounding success that showcased the incredible talents and dedication of the students and staff.

From the very first notes of the overture, the audience was transported into the mystical world beneath the waves through imaginative set designs and skilful choreography. The cast, comprised of students from grade 4-11, brought their characters to life, infusing the beloved Disney classic with their unique energy and charisma. The musical's iconic songs including "Part of Your World" and "Under the Sea", were met with great applause and truly brought the magic of the story to life.

The success of The Little Mermaid not only showcased the students' creative talents but also highlighted the sense of community and collaboration that thrives at Good Samaritan Catholic College. The months of rehearsals and tireless planning all culminated in an enchanting performance that brought together students, teachers, families, and community members in celebration of the arts.



**GOOD SAMARITAN  
CATHOLIC COLLEGE**  
JOURNEY WITH COMPASSION

*Our promise is to help your child excel at the College and in life, contribute to their community and lead the way in our changing society.*



**Enrolments open for Prep and Year 7 2025**

**Catholic co-educational P-12 College**

**High quality learning in a faith filled community**

**Valuing excellence, integrity, justice and hope**



**P 5374 8800**  
**E [psblibli@bne.catholic.edu.au](mailto:psblibli@bne.catholic.edu.au)**  
**W [www.goodsamaritan.qld.edu.au](http://www.goodsamaritan.qld.edu.au)**  
**f Good Samaritan Catholic College**





## Market Snapshot Bli Bli

Provided by Cameron Hackenberg

### Total Sales by Quarter

	2023/22	2022/21	2021/20
Aug - Oct	—	58	72
May - Jul	51	48	62
Feb - Apr	32	46	64
Nov - Jan	29	48	67

Median House Sale Price

# \$870,000

▲ 1.2% change vs. last year

Median Unit Sale Price

# \$700,000

▲ 4.2% change vs. last year

Now is not the time to sell off market with no buyer competition. Over the past month, our office has received offers totalling \$33,270,999 from buyers who faced competition during our open homes. While our office's median remains steady compared to the same period last year, it's important to note that this stability might not be mirrored in the Bli Bli suburb median. Sales outside of Ray White Bli Bli could potentially influence the suburb median in ways beyond our control.

# CAMERON HACKENBERG

DON'T LEAVE YOUR SALE TO CHANCE

0421 504 479

RAY WHITE BLI BLI



# PAIN! THE WHAT, WHY, WHO AND HOW

ACUTE, CHRONIC, DULL, SHARP, PIERCING, GNAWING, THROBBING OR RADIATING. THESE ARE SOME OF THE THINGS WE DESCRIBE WHEN WE EXPERIENCE PAIN. WE HAVE ALL FELT IT AT SOME POINT IN OUR LIVES, SO WHAT IS IT EXACTLY?

The International Association for the Study of Pain defines pain as: "An unpleasant sensory and emotional experience associated with actual or potential tissue damage, or described in terms of such damage."

Nerve receptors trigger electrical impulses up to the brain via the spinal cord, where the brain interprets these signals as negative. The brain instantly interprets the situation, and sends the signals back down the spinal cord to the muscles and joints in the area. We can either get an instant reaction (like pulling our hand away from a hot stove after a burn), or a long term adaptation (such as chronic muscle tension and stiffness from a past injury). Either way, the sensory response we are left with is the sensation known as pain.

Genetics, mood, environment and life experiences all affect how we feel this pain. Something that may be a minor inconvenience to one person, can be devastating and life-altering for another person. Some people will ignore their pain, whereas others can be ruled by their pain and discomfort for a lifetime. Your or old, pain is something we all experience.

Pain is subjective. It can only be measured by the person experiencing it. We all feel differently, so our experiences with pain will always be different. If our bodies are giving us pain, however, then it is up to us to do something about it. Whether it be seeking relief from our pain or dysfunction, or whether we work through temporary pain to achieve something truly fantastic. Either way, listening to our bodies is the best thing we can do, in order to find our path to a better life.

Life can bring pain, but it can also lead us to better things, with the right help and motivation.

Until next time, get out and get moving!







ACTIVE REHABILITATION & CHIROPRACTIC

NEW CLIENT SPECIAL

\$59 initial consults

for the month of October and November\*  
First time clients only

*Everyone gets treatment on their first consult.*

ARC Active Rehabilitation & Chiropractic has been in practice for over 40 years. They have opened a new premises at Bli Bli Village. We offer, Chiropractic, Rehab, Acupuncture and longer consults are the norm.

Phone 5408 4384

Bli Bli Village Town Centre  
Level 3 (Tower 1) Suite 306

ARC Active Rehabilitation & Chiropractic



# Trust Me, I'M A DOG-TOR.

We are extremely lucky at Bli Bli Veterinary Surgery to have a wonderful client base, and to have highly trained, passionate and motivated staff that enjoy their work.

For the most part, working in the veterinary industry is an absolute joy. It is a wonderful thing to be able to nurture the human animal bond and share in the love and enrichment our clients gain from welcoming pets in to their lives. It is an amazing thing to meet a new puppy or kitten for the first time, watch that same little creature grow in to a healthy, thriving adult, and then have the privilege of helping to maintain their health during their senior years.

Like any profession however, working in a veterinary practice does come with a downside. Those who are drawn to work with animals tend to have high levels of empathy, which can be difficult to reconcile with running a profitable, financially viable small business. In order to continue to provide a service to the community it is essential that we must charge appropriately for our services. This sounds obvious, but it can become an ethical conundrum when it means compromising on the care you wish to provide to a patient in order to fit a client's budget. Clients will occasionally perceive this compromise as a lack of care and empathy on our part, however the harsh reality is that without financial viability, like any other small business we would cease to function.

More and more, pets are being perceived as important family members. As when any loved one is unwell or injured, pet owners often become upset, angry, frustrated and occasionally irrational when their animal is under veterinary care. These feelings are all very understandable and come from a place of love and concern. Dealing with them on a daily basis, however, can take an emotional toll on veterinary staff.

Long working hours, poor remuneration and high stress levels mean that more veterinarians are leaving the profession, and trained, experienced support staff are becoming difficult to find. This adds to the pressure on those working in the industry, as it often means unmanageable, non-sustainable workloads.

These are just a few factors that have led to a mental health crisis within the veterinary profession. Studies suggest that veterinarians are four times more likely to end their life by suicide than the average person. On average, a vet dies by suicide every twelve weeks. These alarming statistics reflect the increasing pressures being faced by individuals working in the industry, and various organisations have been formed to increase the general public's awareness of this.

Sophie's Legacy is one such organisation. Sophie Putland took her own life in September 2021 after industry pressures and client abuse became too much. Her family have formed Sophie's Legacy in her honour and are responsible for launching the 'We're Only Human' campaign. This campaign aims to increase awareness of the massive pressures facing veterinary industry staff and encourages people to be kind and respectful.

We understand that having an unwell pet can be incredibly upsetting and stressful. We understand that financial pressures can be overwhelming. But remember that we are here to help you. Not just because it is our job, but because we all truly value the human animal bond and the unconditional love that our pets provide us with.

If you or a loved one is struggling, reach out to Lifeline on 13 11 44.

If you wish to learn more about Sophie's Legacy and the We're Only Human campaign, visit <https://sophieslegacy.com/>.



## Bli Bli Veterinary Surgery

**KEEPING PETS  
HEALTHY FOR OVER  
27 YEARS**

2 Kennedy Road, Bli Bli  
**Ph: 5448 5055**  
Book Online at [www.bliblivet.com.au](http://www.bliblivet.com.au)



Little Sprouts Dinosaur Dig

## Welcome TO PREMIUM CHILDCARE

# WE DO THINGS differently

### What is premium childcare?

- Oversized rooms
- Chef prepared meals
- Large nature based playground
- Health and wellness program
- Bush kinder project
- Computer coding & programming
- Foreign language lessons
- Free monthly mother and baby clinic
- Cooking experiences in dedicated demonstration kitchens
- Dinosaur fossil dig & Waterpark
- Family owned and operated
- Parent lounge with barista quality coffee
- **Little Sprouts welcomes our very own Centre Chaplin, Alyssa available to the Little Sprouts community**

At Little Sprouts Premium Childcare we believe every day is a precious learning opportunity and children need real experiences with mud, trees, fresh air, puddles and pets in a nature based environment driven by children, families and passionate educators.



TWO GREAT LOCATIONS IN BLI BLI  
160 Camp Flat Road - CALL 54 508 470 | 50 Parklakes Drive - CALL 54 508 460  
Email: [littlesprouts@bigpond.com](mailto:littlesprouts@bigpond.com) | [www.littlesproutsearlylearningcentre.com.au](http://www.littlesproutsearlylearningcentre.com.au)



# THE CANE TRAM CROSSING *of the river*

**In February 2022 Sunshine Coasters said farewell to a much-loved bridge over the Maroochy River as flood waters poured down and slowly undermined the Tramway Lift Bridge over the river at the end of Store Road. It was added to the Queensland Heritage Register in February 2005.**

This was a much-loved bridge, used by fishermen and of much interest to tourists who were keenly interested in the old tram lines.

The bridge was the second lift bridge to be erected, in 1917 a lift up bridge was constructed over Petrie Creek. In 1920 the Mill Board sought permission from the state government to bridge the Maroochy River up towards Coolum and this was granted on 10th May 1920. The new bridge was to be a lift bridge and was completed in August 1921.

These bridges that connected the mill with the cane farms, were a key factor in the success of the mill and slowly Nambour evolved around it.

The lift mechanism was necessary as the bridge carried tramline which had to be level with the land on either side of the river. Boats were going to have a problem as the bridge was too low to allow navigation under them. The only solution was to build a bridge with a moveable section.

Further line extensions were carried out, but a shortage of steel and labor (prior to and after) caused by World War One, put the progress behind a bit, but eventually the construction was re-established and the lines continued to fan out.

Moveable bridges fall into three types; the bascule bridge, in which two sections hinge upwards, the swing bridge in which a span rotates away from the river, and the lift bridge.

With this type of bridge lift, the moveable span is located between two towers and can be raised vertically by means of cables, pulleys and counterweights. The span when lifted allows for river traffic to pass beneath. The Maroochy Bridge was hand operated. Larger bridges are controlled by engines.

These bridges are of an uncommon type and this one was believed to be the only remaining example of a bridge with a lift span in Queensland, if not Australia.

This one had a moveable span located between two towers and could be raised vertically by means of a system of cables, pulleys and counterweights. The span remains horizontal when lifted, so river traffic can pass beneath.

In large bridges, engines control the span's movement, though the Maroochy bridge was hand operated.

The moveable span on the bridge lifted to a height of 26 feet, providing a space of 17 feet 6 inches above the high-water mark for boats to pass by.

This tram line became very popular with the residents, by 1923 tram tracks had been laid to Coolum and in those early stages the mill allowed passengers to travel on the open carriages. No accidents have been recorded of anyone falling off.

By 1930 it was the only way to travel. Some of the adults already on the train who had loaded in Nambour and were picked up at Deep Water had to stand all the way on the one hour's journey to Coolum, as more passengers were picked up.

The mail boat which delivered milk, supplies and household goods to landholders along the river needed the span to be opened daily. The school boat also required the bridge to lift when transporting children to Maroochy River State School.

One driver, who had a bullock's horn which he used to great affect when approaching the bridge, as a warning to raise the span to let the boats through. If the span had not been lifted, the mill employee received a longer blast, which on a quiet morning could be heard a kilometre away.

When the mill closed in 2003 it spelled the end of the bridge. With this came the closure of the lines as the bridge was no longer needed to transport cane to the mill.

Maintenance was ceased and year by year the deterioration could be seen. In 1947 the northern half of the bridge was washed away by heavy flooding, but because it was still vital to the supplies to the mill was rebuilt.

This was not the case this time. In the past 20 years with no maintenance and continuous discussions between Government and Council as to who were required to do the work to preserve the bridge, the Sunshine Coast has lost another valuable reminder of the early days of cane.

As like the cane barracks the respect these old buildings had deserved was allowed to pass by our fingers, what next?



Old bridge after 1947 floods, rebuilt. (Photo: Plater Family Collection)



The old bridge just prior to the flood that destroyed it. February 2022 (Photo: Stuart Masters)



The bridge following the February 2022 flood (Photo: Clive Plater, 8th March 2022)



A diver does a final check of the river bed during removal of the bridge. 19th May 2023. (Photo Clive Plater)



A creeping quick survey on Saturday 5th March, at slack tide of the underwriter structure with 3D scanning sonar shows concrete pillars from the bridge trestle base with trees wedged against the structure under the waterline. The old navigation route is no longer safe and a creeping slow route to the North is currently recommended for vessels.

**BLI BLI ON MAROOCHY  
HISTORICAL SOCIETY INC.**

Organisation No. IA 18938

*Here Today ...to Collect, Preserve and Promote Local History*



The School Residence was built in 1920 and is the oldest public building in Bli Bli.

Meet us at the "Former Bli Bli School Residence" 94 Willis Road, Bli Bli  
2nd, 3rd, 4th and 5th Monday February to December from 9.30am to 12.30pm  
Other times are by appointment with President Ailsa Watson  
0408 544 845 / 5448 4848

All Historical Society members, guests, researchers and the public are also welcome to join us on the 1st Monday of each month in the old Church Hall located at 89 Willis Road, Bli Bli from 9.30 a.m. Refreshments provided.





# Bli Bli Uniting Church

10 Lefoes Road, Bli Bli

**Sunday Worship Services:** 9am

**Morning Tea:** 10.00am

**Holy Communion** - 1st Sunday of Month  
Everyone is warmly welcomed. Visitors are always welcome

**Café Lilac** - Ladies Coffee Morning - 3rd Tuesday of month

**Mens Breakfast** - BBQ Breakfast at Park & Co, Parklakes 2 - 2nd Saturday of month at 8.30am

**HALL & CHURCH HIRE AVAILABLE -**

John Rankin on 0458 215 250  
Murray Johnson on 0434 692 176

**Bli Bli & District Garden Club** - Last Thursday of month  
Come and join us from 9am - 12 noon

**Martial Arts** - Held on Tuesday & Thursday nights  
Ring Alan Waddell on 0401 003 455 for information

## Bli Bli Services - Supporting Our Locals

To advertise contact [ads@blibli.qld.au](mailto:ads@blibli.qld.au)

<p><b>ACG Plumbing</b> We're Reliable! All aspects of plumbing, drainage gas fitting &amp; free quotes. No job too big or small. Reliable, fast, friendly. <b>0414 227 471</b></p>	<p><b>Bli Bli Mechanical Repairs</b> Experienced mechanic in Blanch Cres. For all your car troubles. Ring for an appointment. Friendly service. <b>5448 6851</b></p>	<p><b>CK Design Dog Grooming</b> Professional Grooming Salon with a hand scissoring specialist. 41 Avocado Cres. <b>5448 4818</b> by appointment</p>
<p><a href="http://www.blibli.qld.au">www.blibli.qld.au</a></p>		



## WHAT IS ON IN THE OLD HALL AND THE OLD CHURCH?

The Public Hall and the Old Church is the focus of many exciting and varied activities. For any enquiries or bookings call 0427 635 558 or email your enquiry to [bookings@blibli.qld.au](mailto:bookings@blibli.qld.au)

### PUBLIC HALL

	MONDAY	TUESDAY	WEDNESDAY	THURSDAY	FRIDAY	SATURDAY	SUNDAY
7.00am							
8.00am							
9.00am							
10.00am							
11.00am							
12.00pm							
1.00pm							
2.00pm							
3.00pm							
4.00pm							
5.00pm							
6.00pm							
7.00pm							
8.00pm							
9.00pm							
10.00pm							
11.00pm							

**Bli Bli Yoga**  
Heather 0429 860 986  
[heatherkichenyoga@gmail.com](mailto:heatherkichenyoga@gmail.com)

**MBK Dance Studios**  
Hayley 0408 988 119

**Dance Fever**  
Sandra 0432 980 432

**Sundance Line Dancers**  
Heather 0407 174 591

**MBK Dance Studios**  
Hayley 0408 988 119

**Bli Bli Quilters**  
Liz 0408 312 713

**MBK Dance Studios**  
Hayley 0408 988 119

**Sundance Line Dancers**  
Heather 0407 174 591

**U3A Zumba Class**  
Wayne 5430 1123

**Kelly Karate**  
Simon 0408 064 439

**Maroochy River Country Music Club**  
Lynda 0409 588 939

**Zumba with Tianna**  
Tianna 0421 833 971

**Budist Temple (monthly)** Ramon

**MBK Dance Studios**  
Hayley 0408 988 119

**GKR Karate**  
Andrew 0407 695 005

**Sacred Embodiment**  
Sara  
[www.sacredembodiment.com.au](http://www.sacredembodiment.com.au)  
Saturday (monthly) 5.30pm - 11.30pm

### OLD CHURCH

	MONDAY	TUESDAY	WEDNESDAY	THURSDAY	FRIDAY	SATURDAY	SUNDAY
7.00am							
8.00am							
9.00am							
10.00am							
11.00am							
12.00pm							
1.00pm							
2.00pm							
3.00pm							
4.00pm							
5.00pm							
6.00pm							
7.00pm							
8.00pm							
9.00pm							
10.00pm							
11.00pm							

**MBK Dance Studios**  
Hayley 0408 988 119

**Trudi Yoga**  
Trudi 0421 369 262

**Bli Bli Community Association**  
3rd Tuesday 7.30pm - 9.30pm  
Daniel 0427 635 558

**Wayne Hewson Marshal Arts**  
Mark 0409 271 168

**Church of United Spiritualism**  
Rosemary 0409 457 352

**Didgeridoo Music Therapy**  
Caleb 0422 805 580  
5.15pm - 7.30pm

**Trudi Yoga**  
Trudi 0421 369 262  
6pm - 7pm

**Wayne Hewson Marshal Arts**  
Mark 0409 271 168

**Juile (Private Band Practice)**  
Julie 0457 070 131  
Saturday / Fortnightly

**Golden Grown Healing**  
Paul 0410 974 799  
Random Saturday and Sundays

All information is correct at the time of printing





RayWhite

# RECENT SALES BY RAY WHITE BLI BLI



Just Sold

21 Camelot Court, Bli Bli

\$1,325,000



Just Sold

39 Ginger Bell Avenue, Bli Bli

\$1,180,000



Just Sold

31 Ginger Bell Avenue, Bli Bli

\$1,080,000



Just Sold

17a McCall Place, Bli Bli

\$965,000



Just Sold

69-73 Atkinson Road, Bli Bli

\$1,365,000



Just Sold

30 Kathleen Drive, Bli Bli

\$920,000

Contact us today - 07 5450 8111

[raywhiteblibli.com.au](http://raywhiteblibli.com.au)



## BUYER DEMAND IN THE CURRENT MARKET

WE ARE STILL SEEING HIGH BUYER DEMAND DESPITE INTEREST RATE RISES, CONTACT US TODAY TO FIND OUT MORE AND TO CHAT ABOUT WHAT WE CAN DO FOR YOU!

OUR TEAM CONSISTENTLY ACHIEVES HIGHER SELLING PRICES AND GENERATES MORE INQUIRIES COMPARED TO OTHER AGENCIES IN THE AREA.

WHY WAIT? GET IN TOUCH WITH OUR TEAM TODAY  
RAY WHITE BLI BLI - 07 5450 8111