

B L I B L I

BULLETIN
ISSUE 44 | AUTUMN 2022



When our *community* thrives,
we all thrive!

GIVING BACK TO THE LOCAL COMMUNITY



Bli Bli & District
Rural Fire Brigade
\$300



Bli Bli Little Athletics
\$700



Bli Bli State School
\$4,800



Bli Bli Soccer Club
\$4,000



Bli Bli
Give Me 5 for Kids
\$10,500



Good Samaritan
Catholic College
\$3,500



Bli Bli State School
Hall Project
\$10,000



Bli Bli Community Carols
\$2,500



Marcoola Surf Club
\$6,000



Smart Pups
\$6,000



YOUturn
\$11,665



St Vinnies Appeal
\$5,446



The Bli Bli Public Hall & Community Association Inc is the parent organisation of Bli Bli's own local Magazine, distributed FREE to Bli Bli and the surrounding district.
PO Box 1, Bli Bli 4560

ADVERTISING
ads@bilibli.qld.au

Editorial contributions welcome
editor@bilibli.qld.au

Bli Bli Public Hall & Community Association Inc Meetings
7.30 - 9.00pm

Third Tuesday each month
Bli Bli Public Hall

All Residents are welcome.
secretary@bilibli.qld.au

Hall Bookings & Old Church
Bookings: 0427 635 558

bookings@bilibli.qld.au
Business Number 22132715

Design and Print
BrandGrowth - 0431 771 059

Front cover image -
Karen Simpson's Photography

A MESSAGE FROM
THE BLI BLI COMMUNITY ASSOCIATION

The past three months are not the way 2022 was supposed to start and has certainly challenged many people. Fortunately, we were not impacted as severely as Northern NSW, but it was a wake-up call for many people given the extent of the local flooding which we haven't seen at such levels for many years. No doubt there will be ongoing consequences for years to come because of these floods.

Events like flooding certainly highlight what a great community we have with people helping others. Our Rural Fire Brigade were quick to help out in the Gympie region with the clean up and the Castle opened the gates to campers who were otherwise a little wet.

We are fortunate to have a supportive local Council who continue to support the Community Association. They supported us with a \$2000 grant towards the hosting of the Community Christmas Carols and they continue to support us with the Community Partnership Funding program which assists us defraying some of the ongoing costs, like increased insurance premiums. Also, Cr Maria Suarez is very supportive in attending our monthly meeting and providing updates and useful information from Council. It is a great opportunity to raise directly with her issues of concern so that she may take them back to Council.

Just a reminder we invite you along to our monthly Community meetings which are held on the 3rd Tuesday of each month in the Old Church from 7.30pm.

Next edition for Winter closes for submissions to the editor and advertising on Monday 16 May 2022

BrandGrowth
CREATIVE DESIGN STUDIO

LOGOS

WEBSITES

SIGNAGE

PRINT


MARKETING

A small graphic design studio
with a big vision.

No matter the size of your business, we dig deep to draw out the stories and personalities unique to your brand. We'll design eye-catching brochures, create your new branding and logo design, or build you a sleek new website - and still have time to ask you how your day is going.

Ben Mathieson | Ph: 0431 771 059 | www.brandgrowth.com.au





Dan PURDIE MP
Member for **Ninderry**
Shadow Minister for Police and Counter Terrorism
Shadow Minister for Corrective Services

11 Heathfield Road, Coolum Beach QLD 4573 PO Box 989, Coolum QLD 4573
(07) 5406 7900 ninderry@parliament.qld.gov.au danpurdie.com.au
DanPurdieMP @DanPurdieMP danpurdie_mp



Councillor Maria Suarez
Division 9
Environment and Liveability Portfolio

Phone: 07 5475 9810 Mobile: 0437 794 703
Email: maria.suarez@sunshinecoast.qld.gov.au
Mail: Locked Bag 72 Sunshine Coast Mail Centre Qld 4560
sunshinecoast.qld.gov.au

Our region.
Healthy.
Smart.
Creative.

AN UPDATE FROM YOUR LOCAL STATE MEMBER, DAN PURDIE MEMBER FOR NINDERRY

BREAKING NEWS

Following years of lobbying the government for additional bus services to cater for the rapidly growing areas of Bli Bli, it seems we may finally have had a win. While we're yet to be officially advised, it looks like the existing bus route 612 will be extended into Parklakes II. This is exciting news, particularly for the many young families and older residents who call this area home. I look forward to being able to make an announcement about this very soon. Stay tuned!

PEDESTRIAN SAFETY

Late last year, local Diddillibah residents asked for my help to improve pedestrian safety at the intersection of David Low Way and Petrie Creek Road. At the moment, there is no safe way to cross this busy intersection, and previous requests for a signalized pedestrian crossing have gone unanswered. Locals rightly don't want to wait for an accident before action is taken, which is why I sponsored an e-petition, calling on the Government to install pedestrian lights. Although the petition is now closed, I would like to hear from anyone who would like to support our campaign.

MARQUEES

Does your club or group need a new marquee? You may be eligible for one of my free sponsored marquees! These 3m x 3m pop up marquees are quick and easy to assemble, and customized with your club logo and colours. Send an email to my office at ninderry@parliament.qld.gov.au as soon as possible to be considered.

CHANGES TO GAMBLING COMMUNITY BENEFIT FUND

This year, the Gambling Community Benefit Fund will operate a little differently, offering four funding rounds, commencing with one super round of grants up to \$100,000. The first round closes 31 March. The following three rounds will offer grants of up to \$35,000 later in the year. For further information and application details visit <https://www.justice.qld.gov.au/initiatives/community-grants>

TEACHER APPRECIATION

It was no doubt a welcome relief for parents and carers when students finally returned to school earlier this month. It's also been a challenging time for our principals, teachers, support and admin staff, who've been forced to go above and beyond to reimagine education and learning over the past 2 years.

To help ease them back into school life, and to say thanks for all their hard work, I took the opportunity to drop by our local schools to deliver some 'Appreciation Buckets' during the first week back at school. I hope they were put to good use in the staff rooms, far from the eagle eyes of students!

I look forward to hearing from you soon.

Dan Purdie MP
Member for Ninderry



A WORD FROM CR MARIA SUAREZ DIVISION 9 - SUNSHINE COAST COUNCIL

BLI BLI STATE SCHOOL

Work is almost complete on the school travel safety upgrades around Bli Bli State School, thanks to funding under the Queensland Government's Transport Infrastructure Development Scheme (TIDS).

In September 2021, fencing was installed at the School Road crossing as well as at the intersection with Willis Road and on Thomas Road. A new pathway was also built on Philbrook Road.

Completed over the summer – two raised priority crossings at Fairview Close and McCall Place have given active transport users a clear line to cross and also reinforced the need for drivers to give way.

A continuous pathway along School Road, from Fairview Close to Conway Court has improved pedestrian safety along School Road and minimised the need for road crossings.

Thank you for your patience during construction. These projects have made a big safety improvement for the children and parents who use the active travel routes around the school.

NAMBOUR WASTE PRECINCT AT BLI BLI

You may have noticed some construction activity at the tip at Bli Bli. This is because the Nambour Waste Precinct is being upgraded to sustainably manage our region's future waste and move towards a circular economy where zero waste is sent to landfill.

More than \$83 million of work will be completed in the next three years. Included are a new state-of-the-art Materials Recovery Facility, also known as a MRF (sounds like murf); a new Resource Recovery Centre; landfill improvements; and a new signalised traffic intersection at Cooney Road and Nambour-Bli Bli Road for the safety of all road users.

We thank you in advance for your patience during construction. There will be some redirection signs in place within the precinct so please follow onsite signage and traffic control for your safety and the safety of our construction team.

GARDENS ORGANICS BIN READY TO ROLL

The garden organics bin collection service is expanding to households across the Sunshine Coast who don't currently have one from July 2022. It's expected to be about \$35 per year for a 240L bin and is the first step on our journey to a future Food Organics and Garden Organics (aka FOGO) collection service.

Mulching garden waste, instead of dumping it, will extend our landfill life and reduce greenhouse gases being released into the atmosphere. If you already have one, your annual fees will reduce to the new rate. You can find more information at www.sunshinecoast.qld.gov.au/gardenbin.

FIRST STEP IN CREATING A NEW PLANNING SCHEME

A planning scheme sets out council's plan for managing growth and change within our local government area. It applies to land that you own or rent and affects what you can do with your land and what your neighbour can do with theirs. You can help shape the future of our region and your local area. Visit council's website and have your say on the proposed planning directions for the new planning scheme by March 31.

STAY UP TO DATE WITH DEVELOPMENT APPLICATIONS

A friendly reminder that you can stay up to date on new development applications and keep track of others through development.i. With Development.i you can choose to receive a daily or weekly email with new development applications lodge near you. You can save map searches or favourite properties and applications and then set alerts when new applications are lodged and as they progress through assessment stages. Use the online tutorials at developmenti.sunshinecoast.qld.gov.au/ to help you set up your preferences.

As always, please contact council direct for any service requests such as road hazards, graffiti, dumped rubbish, parking, parks, potholes, roads, trees and waste collections. Contact details or service request forms are available at www.sunshinecoast.qld.gov.au.

If you have any other issues or suggestions to discuss, please contact me on 5475 9810 or maria.suarez@sunshinecoast.qld.gov.au.

Cr. Maria Suarez
Division 9 - Sunshine Coast Council

BLI BLI GROCERS CLAIM NATIONAL AWARD

THE TEAM AT WHITE'S IGA BLI BLI HAVE RECEIVED RECOGNITION ON THE NATIONAL STAGE FOR THEIR EXCEPTIONAL CUSTOMER SERVICE.

Bli Bli was selected from 1,400 IGA stores from across Australia as the winner of the prestigious IGA National Customer Service and Experience award 2021.

The awards, now in their 22nd year, are an opportunity to recognise and celebrate the achievements of independent grocers and the role they play in their local communities.

A total of 22 awards were presented throughout the evening with judging criteria covering customer service, community pride, department excellence, brand values, merchandising and overall store performance.

White's IGA owner, Roz White says the customer service award is wonderful recognition of the hard work and positive attitudes that the Bli Bli team turn up to work with every single day.

"The last 12 months have been really challenging for our team and for our wider community. I'm incredibly proud of how much care, kindness and compassion that our team continues to deliver, despite difficulties," Roz said.

The Bli Bli service team is led by Customer Service Manager Karen Baker.

Karen has worked with White's IGA for almost ten years, joining the team and establishing the customer service department when the store first opened in 2013.

"Karen does an exceptional job leading her customer service team of 40, many of whom are locals employed in their first job," Roz said.

"She inspires her team to support community events and in-store fundraisers and always shows up with maximum team spirit and community care."

As supporters of many local groups and organisations, White's IGA Bli Bli's customer and community service extends far beyond the shop walls.

The team actively invests in the well-being of the local area through various fundraisers, donations, sponsorships and charity events and are long-term supporters of local groups such as Bli Bli State School, Bli Bli Soccer Club, Little Athletics, Bli Bli Community Carols and Good Samaritan Catholic College to name a few.

The White's Group were also recognised under several other award categories with IGA Mount Coolum named IGA National Store of the Year 2021 and IGA Dairy-Freezer Department of the Year.

"Winning these awards is such a huge achievement and testament to the talent of our team members and the leadership shown by our department and store managers," Roz said.



A MESSAGE FROM TED O'BRIEN - FEDERAL MEMBER FOR FAIRFAX

Phone: 5479 2800 Email: ted.obrien.mp@aph.gov.au Web: www.tedobrien.com.au
Mail: PO Box 1978, Maroochydore QLD 4558

RECORD LOW UNEMPLOYMENT

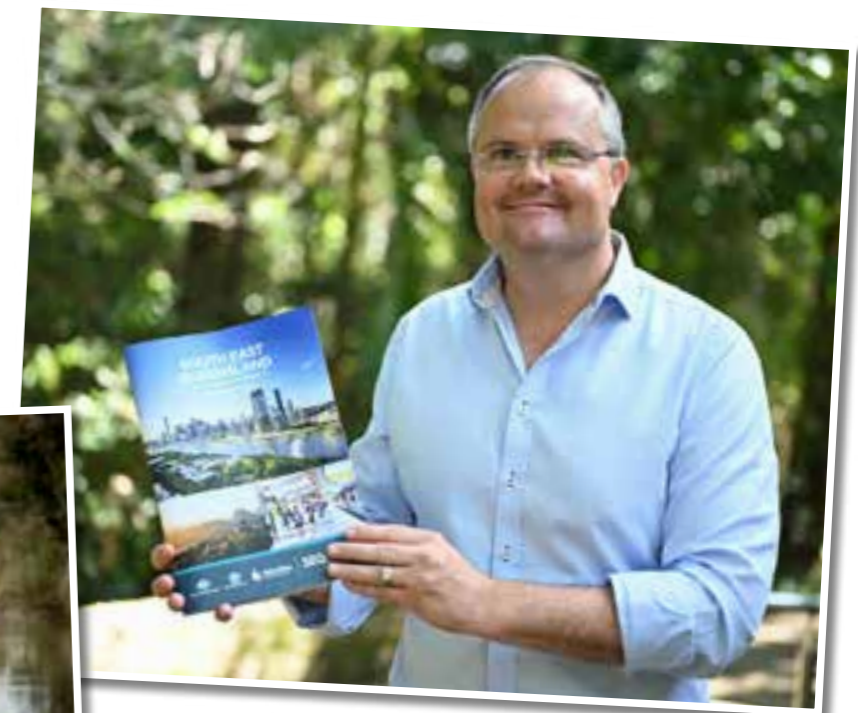
While there is still much work to do, the latest economic figures demonstrate Australia's strong economic recovery from COVID-19. Unemployment for women is now at the lowest level since 1974 at 3.8% and overall unemployment is just 4%. Despite the economic hit from COVID-19, more people are in jobs today than before the pandemic. In short, this shows our economic plan is working. Rest assured, I am very aware of the challenges facing many local businesses, we have more to do.

FLOOD SUPPORT

The floods which struck the east coast of Australia hit hard. Lives were lost, properties were damaged, and businesses were disrupted. Despite the extraordinary resilience of those impacted, many people are still hurting and need help.

In response, the Federal Government immediately sprung into action and activated a range of payments and support measures to help impacted individuals, families, businesses, community groups and sporting clubs recover.

Support ranges from single payments of \$180 for individuals to \$75,000 for primary producers. If you, or someone you know, have been impacted by the floods please head to www.tedobrien.com.au/flood-assistance/ for a complete list of payments.





MISSION STATEMENT

Bli Bli State School inspires children to confidently contribute to our dynamic world through strong foundations of commitment, creativity, character and community.



OUR VISION FOR OUR FUTURE

Bli Bli State School continues to go from strength to strength, and due to the commitment, dedication and strong focus on supporting every child to become their best self, to achieve their best, and to live their best life we are proud to share with you our focus for the coming years. Our school is committed to helping every child succeed and ensuring we offer our students an engaging, strong curriculum and positive culture that promotes care, dignity and equity for all.

Our key 'pillars' of development and growth in the coming years include:

Digital Futures – ensuring our children are able to access and utilise technology to support the development of knowledge and skills to support their future.

21st Century Curriculum – implementing the Australian Curriculum across all classrooms, through focus on unit development and design, strong pedagogical approaches and ensuring students are highly engaged and extended.

Literacy & Numeracy in focus – valuing and supporting the key role that strong literacy and numeracy skills play in every student's future.

Positive Culture 4 Learning – focusing on supporting positive behaviour, and the wellbeing of all within our community.

Diversity – We all Belong – recognising and supporting the diverse range of students, staff and families that make up the Bli Bli School Community and ensuring that our school remains focused on equitable practices to support all.

We also continue to invest in our grounds and facilities with plans this year that include a new Year 1 playground, updated amenities block, external repaint commencing, and upgrading a number of classrooms.

Bli Bli State School is a great place to work and play every day.

Monique Pfingst
Principal

Bli Bli State School - Our Vision and Priorities 2022-2026



Over the next 4 years, our school will show continued focus, development and improvement across these identified keys areas to ensure we continue to meet the ever-evolving needs of our students, staff and community.



LEARNING THRIVES AT Bli Bli

"I know you'll be kind... and clever... and bold. And the bigger your heart, the more it will hold. When nights are black and when days are grey - you'll be brave and be bright so no shadows can stay."

From The Wonderful Things You Will Be by Emily Winfield Martin

Isn't it amazing how resilient children are? In a year like no other, plagued with hurdles small and large, learning thrives here.

My thoughts like this are reaffirmed every day at Bli Bli State School. From the first exciting moments of school for our new Preppies to the fusion of seven years of learning unfolding right now for our Year 6 leaders, our students are stepping up to the challenges all around them. While a school term two weeks shorter than usual could have meant a big problem for many, our staff and students have simply jumped this hurdle with all the grace and character you would expect from the people of Bli Bli.

For this edition though, I'd like to feature a couple of snippets of the excellent work our Year 4 students are completing currently. Their task is to write a new chapter to fit into a novel being read by the class and also to create a digital image of the setting – in this case the volcanic islet in the story Nim's Island by Wendy Orr. Our continued work at school will be to find new ways to engage students in their learning and to be innovative with our curriculum offerings. I hope you enjoy seeing a little bit of this in action here.

Nim's Island Chapter 7 by Malikai

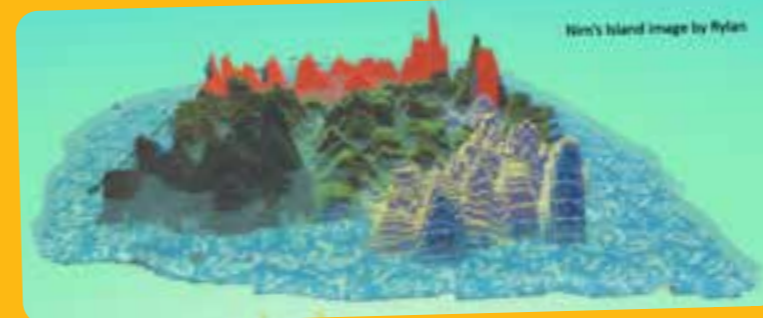
Nim sat down and Fred climbed off her shoulder and they both took a deep breath. As she hopped from foot to foot she could hear rumbling from below. "Oh, never mind. That's just Fred's Tummy," thought Nim. "Fred, what was that?" she said, "Oh right, animals can't talk." Nim took one wrong step. "Ow," she mumbled. Then, "OH NO!" she screamed as she slipped and slid down in towards the volcano. Tree branches were slapping her hard in the face. "Fred, where are you?" she questioned...

Nim's Island Chapter 14 by Meedeena

As Nim kneeled down gathering Selkie and Fred for a warm, friendly hug in the rocky, humid cave, she was worried sick about Jack. Soon after, poor Alex was stuck - tied up in an old shipwreck under the coral sea as the waves rocked it side to side. Nim was curious as to what was going to happen. Previously Selkie was shivering until the substantial, interrupting storm stopped. Everyone stood in silence sensing another storm but Nim was miserable that her and Jack's family home was torn into pieces. Nim was drowsy and hollow-eyed but had nowhere to rest...

Joel Batson

Head of Curriculum



CONGRATULATIONS!

The leaders of tomorrow.

The entire Bli Bli State School community congratulates our newly inducted student leaders for 2022.



Bli Bli School Tour

EXPERIENCE WHAT Bli Bli State School HAS TO OFFER YOUR CHILDREN ON A TOUR OF OUR GREAT SCHOOL.

If you are considering enrolling at Bli Bli State School, we encourage you to visit the school for one of our regular School Tours.

After your campus tour you are welcome to stay and chat with our staff. All tours commence from the Administration Building of the school.

Book your spot today by contacting the school on 5458 2111.

UPCOMING TOURS

Starting at 9.15am

Thursday, 12th May

Thursday, 2nd June

Tuesday, 14th June



ENROLLING AT Bli Bli State School

Learn and play in our friendly school community

We provide a nurturing and supportive environment for your children where their individual needs are respected and personalised learning approaches allow for each child to have the opportunity to reach their full potential.

Parents wishing to enrol at Bli Bli State School will need to demonstrate that the student's principal place of residence is within the schools catchment area, or submit an Expression of Interest to enrol. This form can be found on our website.

Please check out our website for details on applying for enrolment at Bli Bli State School. www.bli bliss.eq.edu.au



BLI BLI SCORES FUTURE SPORT AND RECREATION FUN

Almost 100 hectares have been set aside for future sport and recreation at Bli Bli.

The 97 hectares at Godfreys Avenue, Bli Bli, was purchased by Sunshine Coast Council and will provide added opportunities to the existing network of council owned and managed sport and recreation spaces.

Sunshine Coast Council Division 9 and Environment and Liveability Portfolio Councillor Maria Suarez said the properties, located just north of the Maroochy River, would help council maintain the rate of four hectares sport and recreation land per 1000 residents, a target set in the Banksia award-winning Environment and Liveability Strategy.

“It will also ensure public open space is distributed equitably throughout the Sunshine Coast local government area so everyone has access,” Cr Suarez said.

“Sport and recreation spaces are fundamental to our region’s future and this purchase demonstrates council’s commitment to proactively plan and deliver long-term projects which protect our region’s environment and liveability, and provide the active, healthy lifestyle we all value.

“This strategic acquisition takes a long-term view as to what our community will need in respect to providing sport and recreation facilities as the population grows.

“It will be a number of years before residents will see facilities coming out of the ground and there remains a great deal of planning and funding to be sought before this project officially commences.

“Open spaces also help council mitigate the impacts of climate change by contributing to managing flood waters in extreme weather events.

“These lands, located within the Blue Heart, build on the important work already done in the area and will contribute to the environmental, social and economic co-benefits the project seeks to achieve.”

The Blue Heart is an area of more than 5000 hectares on a natural floodplain in the Maroochy River catchment and includes approximately 1400 hectares of public land.

In addition to the recently purchased Godfreys Avenue land, it also includes Council’s Coolum Creek Environment Reserve network, the Queensland Government’s Coolum Creek Conservation Park, and Unitywater’s Yandina Creek Wetland.

Cr Suarez said a key objective for the Blue Heart included protecting the Maroochy River floodplain as a flood storage area.

“It also seeks to provide opportunities for sport and recreation parks and sportsgrounds for the community to enjoy,” Cr Suarez said.

“This purchase aligns with the Sunshine Coast Community Strategy 2019-2041 which aims to empower our community to live healthy and active lifestyles.

“It’s through integrated, strategic planning and innovative projects that council will realise our vision for the Sunshine Coast: Australia’s most sustainable region – Healthy. Smart. Creative.”

To find out more about Blue Heart, visit Council’s website: sunshinecoast.qld.gov.au/blueheart.

The Bli Bli land was purchased in line with Council’s Local Government Infrastructure Plan, with a significant financial contribution made by developers by way of Infrastructure Charges, to provide for major recreation parks and sportsgrounds.

Cr. Maria Suarez
Division 9 – Sunshine Coast Council



Bli Bli Dental

New patients welcome



Child Dental Benefit Scheme

Bulk Billed Here

Contact us to check eligibility

10% SENIORS DISCOUNT*

Discount will be applied on presentation of QLD seniors card



Dr David Baker is the new owner of the previously named Practice, Bli Bli Smiles. **Bli Bli Dental** is conveniently located in the Bli Bli Village with onsite parking, elevators and wheelchair accessibility. Our team of friendly staff look forward to welcoming you and caring for our new Bli Bli Community. **Come and say Hi!**

David Baker graduated from Griffith University with a Bachelor of Oral Health in Dental Science and graduate diploma in Dentistry and was keen to start his career. Having worked in Private practice, he saw the need for a service dedicated to providing Quality Dentistry in an environment that is both caring and relaxed that inspired him to open his own Practice. After 7 years of treating the Toowoomba community, David then relocated to the beautiful Sunshine Coast with his wife and three sons.

David focuses on educating his patients to enhance their own dental knowledge. His approach to Dentistry is a conservative one and provides his patients with minimally invasive and preventative dentistry solutions. David’s continuing education and participation in conferences and workshops ensures he stays abreast with the latest Dental technologies to deliver the highest standard of Dentistry to his patient’s. David enjoys all aspects of Dentistry with a keen interest in Oral Surgery and Implantology.

P: 5448 4811 • Level 3, Building 2, 310 David Low Way, Bli Bli QLD 4560

reception@bliblidental.com.au • www.bliblidental.com.au

We invite you to **BOOK YOUR CAMPUS TOUR TODAY**

Valuing what matters most.

www.ncc.qld.edu.au
2 McKenzie Road, Woombye QLD 4559

Call us today 5451 3333 | enrolments@ncc.qld.edu.au

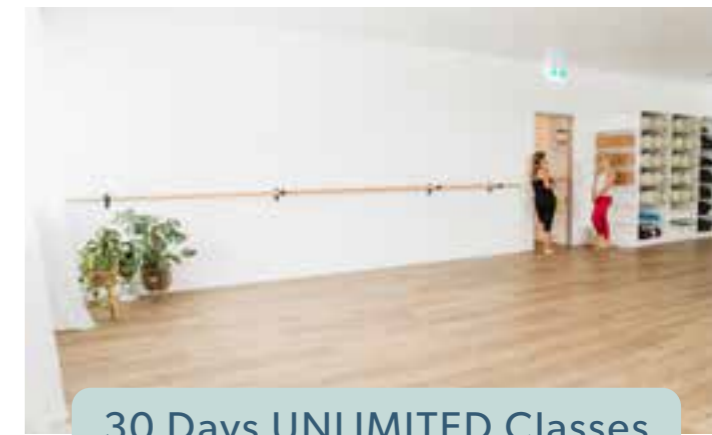


AKTIVLIVING

YOGA - BARRE - PILATES
ALL LEVELS WELCOMED

Experience Aktivliving Studio
Bookings: mindbodyonline.com

Mobile 0459 900 936 | Email: aktivliving@gmail.com | Level 3, Bldg 1, 310 David Low Way, Bli Bli Bli Village Centre (F45 End of the Building)



30 Days UNLIMITED Classes

for ONLY \$59

- Yin and Yin Yoga
- Vinyasa, Gentle, Slow and Power Yoga
- Adaptive Yoga
- Meditation and Breath
- Pilates
- Barre HIIT
- Barre
- Mobility and Strength
- Stick Yoga
- Kids Yoga
- Workshops and Retreats



Quality - Reliable - Efficient

PLUMBING & GAS

Sunshine Coast & Surrounding Area

LOCALLY OWNED AND OPERATED

DOMESTIC - COMMERCIAL - INDUSTRIAL

- General Plumbing and Gas Maintenance
- After Hours and Emergency Service
- Senior Discounts
- Renovations
- Blocked Drains and Burst Pipes
- Taps and Toilets
- Gas Compliance Certificates
- Hot Water Systems

SPECIALISED SERVICES

- Backflow Prevention Devices
- Thermostatic Mixing Valves
- Emergency Eye Washes and Showers
- Drain Camera and Locater

Call **Mitch** Today
0407 966 665

LIKE US ON FACEBOOK & CHECK OUT OUR WORK



Master Plumbers' Association of Queensland

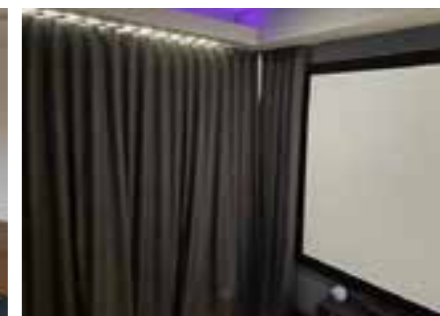
Member

QBCC Licence No. 15037335 No. 1293749

Email : info@amplumbing.com.au
Website : www.amplumbing.com.au
ABN : 11 615 207 791

**CURTAINS FOR STYLE • CURTAINS FOR BLOCKOUT
CURTAINS FOR WARMTH**

Whatever your need, we've got you covered.



Darren's BLINDS
SHUTTERS & CURTAINS
Sunshine Coast

Local business, local products

We're as local as you can get!

And all our curtains are locally made

Darren's expertise will guide you through your choices, book now for a free onsite quote.

0476 327 736

www.darrensblindsshutterscurtains.com

PROPOSED CENOTAPH AVENUE OF HONOUR

Parklakes Drive, Bli Bli.

The RSL Sunshine Coast and Regional District together with the Sunshine Coast Council and various Community Organisations are proposing to erect a modern Cenotaph at the southern end of the existing Avenue of Honour.

The Avenue of Honour was created by the Developers of Parklakes 2 in conjunction with the RSL as a living memory to honour those Australian Defence personnel who have served and those who continue to serve our country.

On special days each year, the Cenotaph and the Avenue will become a sacred space to allow the Bli Bli Community to reflect and remember and to pledge for a brighter future.

It is also planned to upgrade the signage of the Avenue at each end to match the Cenotaph and to provide more information on the importance and relevance of the Avenue.

There are 26 Fig trees planted along Parklakes Drive and each tree represents a different conflict or country where our Forces were involved. These are identified by a brass plaque fixed to a boulder adjacent to each tree.



ON SPECIAL DAYS EACH YEAR, THE
CENOTAPH AND THE AVENUE WILL BECOME
A SACRED SPACE TO ALLOW THE BLI BLI
COMMUNITY TO REFLECT AND REMEMBER
AND TO PLEDGE FOR A BRIGHTER FUTURE.



YOUNGS
ELECTRICAL CONTRACTING

Electrical & Airconditioning

0418 275 429
Based in Bli Bli

**New Homes
Renovations
TV & Data
Hot Water Repairs
Free Quotes**

Taps & Toilets
Plumbing Services

Jamie Younger
Plumber

Phone: 0404 030 796
PO BOX 143, Bli Bli QLD 4560
Email: tapsntoiletsplumber@bigpond.com qbcc 1230307

TAPS | TOILETS | HOT WATER UNITS | BLOCKED DRAINS

Scott Murchie

QBCC Licence No 069485

PAINTING & DECORATING

- All Areas • New Homes • Repaints
- Insurance Work • Free Quotes

QUALIFIED TRADESMAN
ALL WORK GUARANTEED

Mob: 0419 779 822
ssmurchie@westnet.com.au

WHEN HELP WAS NEEDED DURING THE FLOODS

Hello Bli Bli Bulletin,

Just a little note to advise you of kind and considerate gestures during your flooding of 26 & 27 February.

To Birte and Stephan (owners of the Castle, Bli Bli) thank you, thank you. You opened your doors in our time of need to complete strangers, gave us access to the amenities and a safe haven until the waters receded.

During the last big rain event, five caravan travellers ended up in the front car park of the Castle at Bli Bli. What a great example Birte and Stephan's compassion and Community spirit to help strangers in their time of need. Birte arranged a Happy Hour with us all, a magic move which took our minds off the washed out experience we just had to deal with.

Many Thanks Again, From the Caravaners.



BLI BLI & DISTRICTS RURAL FIRE BRIGADE

Bli Bli & Districts Rural Fire Brigade and crews from all over the Sunshine Coast were called to action to assist the Mud Army in Gympie.

Our brigade had crews on the ground for multiple days helping the locals. Along with our First Officer assisting with Incident Control.

Our hearts go out to all of those affected by the recent weather events.

Bli Bli & Districts Rural Fire Brigade crew also went out to Coolum SES Group to help fill sand bags.



Get ready to GO

Your new **Garden Organics** bin arrives soon.

We're expanding our three-bin waste collection system. For residents who don't already have a garden organics bin, your new service starts July 2022.

LET'S GET WASTE SORTED

For a cleaner, greener and sustainable Sunshine Coast.



[FIND OUT MORE](#)

sunshinecoast.qld.gov.au/gardenbin
07 5475 7272

Please ensure the lid closes. Leave everything loose, no plastic bags.

What can go in your garden organics bin?

- Garden clippings
- Weeds
- Leaves
- Garden prunings
- Flowers
- Small branches, and palm fronds cut into small 30cm pieces

What can't go in your garden organics bin?

- General rubbish
- Plastic bags
- Logs, stumps or tree limbs larger than 30cm
- Bricks rocks or rubble
- Dirt, soil, sand or potting mix
- Fruit or food scraps
- Treated timber
- Recyclables
- Garden accessories like plant pots, gnomes or hoses
- Rope or plastic

Sunshine Coast COUNCIL

Our region. **Healthy. Smart. Creative.**



Get ready to GO

Your new **Garden Organics** bin arrives soon.

We're expanding our three-bin waste collection system. For residents who don't already have a garden organics bin, your new service starts July 2022.

Our aim is to send no waste to landfill by 2041 by reducing, reusing and recycling.

Our research shows 55 per cent of material in general waste bins is organic material that could be repurposed.

Mulching garden waste for reuse, instead of dumping it, reduces

landfill and greenhouse gases – helping to create a cleaner, greener, and sustainable Sunshine Coast.

- easy and convenient
- good for the environment
- low cost fortnightly service

Sunshine Coast COUNCIL

Our region. **Healthy. Smart. Creative.**

LET'S GET WASTE SORTED

CLEANER GREENER & SUSTAINABLE

Find out more



sunshinecoast.qld.gov.au/gardenbin
07 5475 7272

The Bli Bli market is booming...
the buyer activity is through the roof!
Our results speak for themselves.

Happy
EASTER
to you and the Bli Bli Community



For all your Bli Bli Real Estate needs



**How Much Is
Your Home
Worth?**

Call For A
Free Appraisal

Jason Burns - 0417 762 001
admin@firstnationalriverside.com.au

ALL DECKED OUT AT MAROOCHY RIVER GOLF CLUB

WITH THE TERRACED DECK AREA OPENING RECENTLY, IT IS GREAT TO SEE AND HEAR OF SO MANY LOCALS UTILISING THE AREA WITH EXPANSIVE VIEWS TO MOUNT COOLUM. THIS COMPLETES RENOVATIONS TO THE CANE CUTTERS BAR & BISTRO, WHERE FAMILIES CAN COME AND ENJOY THE CLUB FACILITIES IN A SUPERB ENVIRONMENT.

Bli Bli and nearby residents may have seen extra activity happening at the Maroochy River Golf Club since the big wet hit us. The club suffered some flooding on the golf course but our expert ground staff and volunteers were able to get the course back in tip top shape very quickly.

Thousands of guests at the Maroochy River Mini Golf course (adjacent to the Clubhouse), have been swarming in to play 18 holes of mini golf with specially designed putters and balls. The guests have been enjoying the Cane Cutters Bar & Bistro facilities and taking in the great views of the golf course to the North, with Mount Coolum on the horizon, as the sunset's glistens across the water in a friendly family atmosphere, standing around the wine barrels on the shaded terrace.

For those who are still not sure what mini golf is, it is a supercharged version of the old 'putt putt' game but without clowns faces and animal obstacles etc... Instead, it has classy, landscaped humps & hollows, delightful water features and pretend sand traps. Overhead lighting for the evening players and great background music make the mini golf so much better! There are 18 holes with two challenge

levels to choose from.... easy one for relaxed fun players and a harder one for players who are looking for a bit of a challenge.

If you are thinking of having a party, (and we are currently catering for every type of party – children's & adult birthdays, special occasions, work parties), the Cane Cutters Catering crew can offer all sorts of options for you. Menus are on the website.

Families, as well as people of all ages, love coming out in the fresh air, sharing some value time, having some drinks, staying for a pizza or snack. The mini golf course is open from 9.00am every day until late. Game costs are just \$17 for adults, children \$12. A family of 4 is only \$45.00 7 days a week, and a special Friday Family Pizza Deal is only \$70 and provides games for 2 adults and 2 children (extra children only \$5-max 2 extra), an 11 inch pizza, bowl of hot chips and jug of Schweppes soft drink! No bookings required.

But, wait! there's more... With easy parking the Cane Cutters Bar & Bistro is open every day for mouth-watering lunches and a great menu! There is a fully developed grassed driving range open every day also evenings from Wednesdays, not to mention 18 holes of championship golf to be played as well. Bring your sticks, bring your family, it's all here at MRGC.

For more information on club facilities, games or mini golf, go to maroochyrivergolfclub.com.au or call Reception on 5373 1000 to book a table. Bli Bli and nearby residents are always welcome (become a social member for just \$5) and receive club discounts at the Cane Cutters Bar & Bistro. Hope to see you soon....

Maroochy River Golf Club – The new terrace deck is a stunning feature of the Cane Cutters Bar & Bistro.... The place to be!



2021 Golf Club of the Year

- Friday Night Raffles & Members Draw are back
- Courtesy Bus running Friday nights
- NEW mouth watering menu
- Family friendly atmosphere
- Enjoy magnificent views



- Adults: \$17.00 each
 - Child: \$12.00 each (<18 years of age)
 - Family Pass: \$45.00 (2A+2C)
 - Fun for the whole family
 - Open 7 days - 9am until late
 - Great food and drinks available
 - Family Putt n Pizza Deal: \$70.00
- visit maroochyriverninigolf.com.au

Let's Play

admin@maroochyrivergolfclub.com.au www.maroochyrivergolfclub.com.au



10 DAYS OF UNLIMITED HIIT FOR \$10!*

You'll never get bored when you workout with us with new cardio, strength and fusion sessions daily. Meet new people, get fast results and have fun with J Series! Get 10 days for just \$10*



- ✔ Burn fat fast. Seriously fast.
- ✔ Adaptable to suit any fitness level
- ✔ Short 30min workout
- ✔ Fun group environment
- ✔ Pumping music!
- ✔ Friendly & supportive Coaches

Jetts Bli Bli
 Level 2 (next to the hairdresser)
 308-312 David Low Way
 Bli Bli QLD 4560
 Instagram: @jettsbllibli

BLI BLI'S MOST LOVED GYM.



ARE YOU SUFFERING FROM HEADACHES?

HEADACHES ARE ONE OF THE LEADING CAUSES OF VISITS TO THE LOCAL DOCTOR, WITH 96% OF PEOPLE HAVING SUFFERED AT LEAST ONE HEADACHE IN THEIR LIFETIME. THESE VISITS CAN BE COSTLY, WITH AN ESTIMATED \$14 BILLION DOLLAR PER YEAR BILL FOR HEADACHES IN THE UNITED STATES ALONE!

With over 150 types of headaches in existence, the pain can be difficult to diagnose accurately. This wide array of conditions can usually be classified as either a primary headache, or a secondary headache.

Primary headaches are ones that have no real underlying cause, only the symptoms of the headache (e.g. pain, throbbing, tension). Secondary headaches are headaches that are being actively caused by another condition, or in response to another condition in the body.

Tension headaches, migraines and cluster headaches are all classified as primary headaches, whereas headaches from trauma, vascular disease, or infection would be classed as secondary headaches. It is very rare to have headache as the only symptom of another condition (around 1% of brain tumours have only headaches as the sole symptom), so keeping track of any other strange feelings or sensations can be very useful in diagnosing the type of headache.

Despite their classification, primary headaches can be treated very effectively. Neck and facial muscle tension are a very common cause for nonspecific headaches. Restriction or locking in the neck or jaw (TMJ) are the most likely causes of this overwhelming tension in the head that will give a headache.

Massage and release of the muscles in the head, neck and jaw are the quickest way to relieve these headaches, while adjusting of these areas will allow these areas to function properly, and stop these types of headaches from reoccurring.

The human body functions as a complete unit, so it is very possible that these unexpected headaches can be the "tip of the iceberg" so to speak, so it is important to stay aware of any potential issues in your body. Keeping track of any issues, from the top of your head to the bottom of your feet, can potentially stop any nasty headaches from happening before they start.

As always, we offer a number of ways to manage any of these conditions that can lead to a headache, with massage and adjusting as well as acupuncture, followed by rehabilitation through stretching or activity. Prevention of headaches and head pain will allow you to live a better life, and keep you happy and healthy!



ARC Active Rehabilitation & Chiropractic
 now open in Bli Bli

NEW CLIENT SPECIAL
\$59 initial consults

for the month of April and May*
First time clients only

Everyone gets treatment on their first consult.

ARC Active Rehabilitation & Chiropractic has been in practice for over 40 years. They have opened a new premises at Bli Bli Village. We offer, Chiropractic, Rehab, Acupuncture and longer consults are the norm.

Phone 5408 4384

Bli Bli Village Town Centre
 Level 3 (Tower 1) Suite 306



* Terms and conditions apply

BEE STINGS

With summer well and truly upon us, blossoming trees and flowers are popping up all over the garden – and with them comes bees. Your dog or cat might think a bee is a harmless new friend, providing a bit of excitement and a fun game of chase! However, this can result in them receiving a bee sting to the face, mouth, or paws.

It will be very clear almost immediately if your pet has been stung.

You're likely to notice:

- A sudden or continuing cry from your pet, indicating pain and discomfort
- Your pet running around in circles or otherwise behaving erratically
- Licking, chewing, or pawing the same spot repeatedly
- Unusual swelling
- Excessive drooling
- Pale gums

If your pet has been stung by more than one bee, or in the mouth or throat, their reaction is more likely to be severe. In these cases, pets can experience more severe reactions such as:

- vomiting
- hives
- profound swelling
- collapse
- difficulty breathing

Your dog or cat might think a bee is a harmless new friend, providing a bit of excitement and a fun game of chase! However, this can result in them receiving a bee sting to the face, mouth, or paws.



What to do if your pet has been stung

Stay calm! Panicking will only increase your pet's stress. The stinger will continue to release venom until it has been removed, causing pain and discomfort.

If you notice any of the severe reactions, please call ahead and make your way to a Vet immediately. Like us, they can experience anaphylactic shock.

If your pet is having a mild reaction and experiencing discomfort only, try to locate the site of the sting. If you can find it, remove the stinger gently with tweezers. Once you are sure the stinger has been removed:

- Apply cool water by washing the site or pressing it gently with a wet cloth.
- Keep an eye on your pet for any developing symptoms, and ensure they remain well hydrated.
- If your pet appears uncomfortable or develops a more severe reaction after removing the sting, please give us a call for further advice.



Little Sprouts Dinosaur Dig

Welcome TO PREMIUM CHILDCARE

WE DO THINGS differently

What is premium childcare?

- Oversized rooms
- Chef prepared meals
- Large nature based playground
- Health and wellness program
- Bush kinder project
- Computer coding & programming
- Foreign language lessons
- Free monthly mother and baby clinic
- Cooking experiences in dedicated demonstration kitchens
- Dinosaur fossil dig & Waterpark
- Family owned and operated
- Parent lounge with barista quality coffee
- **Little Sprouts welcomes our very own Centre Chaplin, Alyssa available to the Little Sprouts community**

At Little Sprouts Premium Childcare we believe every day is a precious learning opportunity and children need real experiences with mud, trees, fresh air, puddles and pets in a nature based environment driven by children, families and passionate educators.



Bli Bli Veterinary Surgery

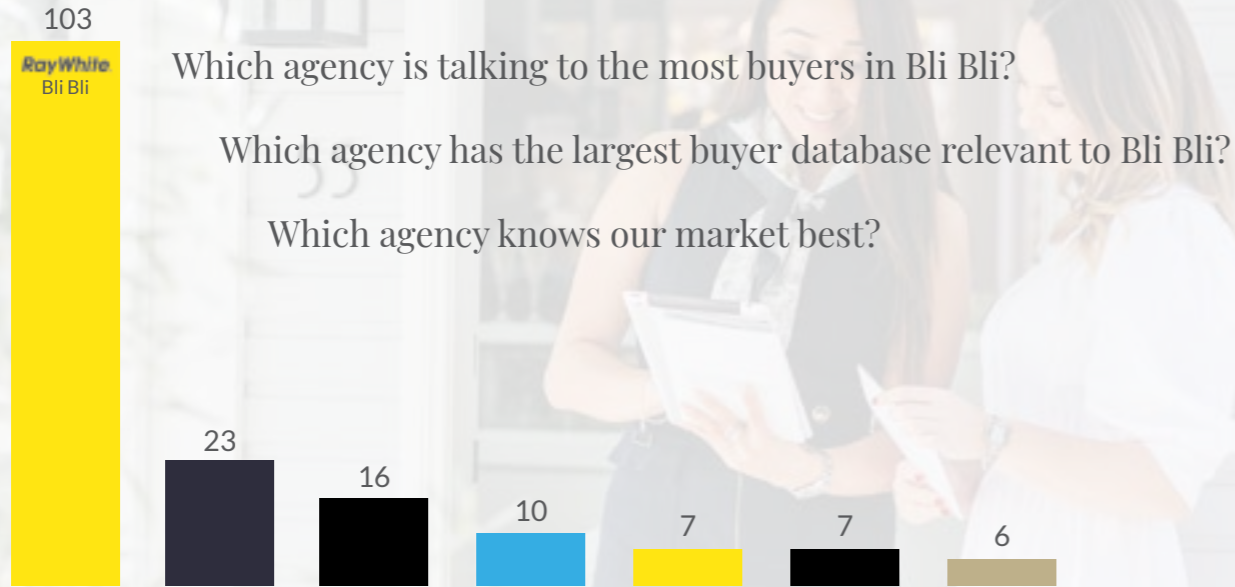
KEEPING PETS HEALTHY FOR OVER 27 YEARS

2 Kennedy Road, Bli Bli
Ph: 5448 5055
Book Online at www.bliblivet.com.au



Sales in Bli Bli over the past 12 months..

RayWhite



Which agency is talking to the most buyers in Bli Bli?

Which agency has the largest buyer database relevant to Bli Bli?

Which agency knows our market best?

*Source: realestate.com.au 12mths to 21 March 2022
Agencies less than 6 sales are not included.

Ray White Bli Bli | 07 5450 8111

RECENT FLOODS

The aerial picture shows the recent February flooding looking east to Mt Cooloom from Bli Bli across the river and cane fields. It was apparent that in some areas the flood levels were as high as the 1992 flood which is the most recent flood of this magnitude. But in other areas it was still below the 1992 levels. With much development in the basin in the past 30 years, there will be differences between the two floods.

The area pictured is what is known as the "Blue Heart" area that Council and the State Government are looking to spend significant monies in land acquisitions. Clearly the past use of sugar cane managed to deal with such inundation which lasted for 1 week in some areas and longer in other areas. It is a question of how to best manage these sorts of events, so that the land is not just locked up and left to be infested with noxious weeds and vermin.





NORTH SHORE Seafoods

Local fresh & cooked seafood

DAILY SEAFOOD
Cod, Snapper, Coral Trout, Whiting, Orange Roughy, Barramundi, Salmon, Dory, Mixed Reef and Flake

• Wide selection of other fresh local fish caught daily.
Ask us what our daily catches are.

HOME MADE FRESH DAILY
Potato scallops, calamari, prawn cutlets, crumbed oysters, battered fish bites, battered sea scallops & mussels
also battered savs... pineapple fritters...

Burgers > Seafood Packs

Proudly supporting the local fishing industry



We pride ourselves in supporting our LOCAL FISHING INDUSTRY & LOCAL FARMERS for our fruit & veg!
So why drive when we have it all right here?

Also Available Daily, Fresh Oysters, Scallops, Prawns Cooked and Green, Squid and Mussels.

Ph 5448 7755
Shop 1/708 David Low Way Pacific Paradise
Open 7 days 11am - 7pm

BUYING NOW

GOLD JEWELRY & GOLD COINS COINS: CROWNS, 1966 ROUNDS, FLORINS, SHILLING, OTHER SILVER COINS

BROKEN OR UNWANTED JEWELLERY OR COINS SITTING IN A DRAWER?

Are you no longer collecting?

Are the family not interested?

Would the money be of more use?

GOLD COINS

- Australian \$200 Gold Coins
- Sovereigns
- Half sovereigns
- World proof coins and sets
- Commemorative coins
- Gold Coins: mounted, holed, or worn
- Gold medals and fobs
- All other world gold coins

WATCHES

- All Rolex watches (including Submariner, Oyster, Daydate, and Datejust)
- All Omega (including Seamaster & Constellation)
- Tudor & Breitling
- Mechanical (automatic & wind up)
- Gold and silver pocket watches
- Military pocket watches
- No quartz / battery watches

SILVER COINS

- Australian - Crowns, Florins, Shillings, Six Pences, Three Pences, 1966 50 cent rounds
- South Africa, USA & Canada
- NZ, Great Britain, Fiji
- New Guinea Shillings
- Misc Silver Coins
- All Other World silver coins

GOLD JEWELRY

- Gold chains
- Gold bracelets
- Gold necklaces
- Worn & broken gold jewelry
- Gold rings
- Bullion bars
- Nuggets & alluvial gold
- Gold earrings

WORLD/AUSTRALIAN COINS

- All world coins
- Collection and accumulation
- Error and mis-strikes
- Proof sets and singles
- Trade tokens
- Discount and special purpose tokens

JEWELRY

- Rings, brooches, pearls
- Pendants and sovereign cases
- Watch chains & lockets
- Gold cuff links
- Bracelets & bangles
- Necklaces and all broken jewelry



CASH PAID. I COME TO YOU.
RING BRIAN ON 0401 379 401

THE TIMBER TRADE ON THE MAROOCHY RIVER

TOM PETRIE EXPLORED THE LOWER MAROOCHY IN 1862 AND HIS ABORIGINAL TIMBER-GETTERS CUT LARGE QUANTITIES OF CEDAR LOGS IN THE BUDERIM, EUDLO CREEK AND PETRIE'S CREEK AREAS.

Enter William Pettigrew. Pettigrew was a mild mannered, methodical man with a good business head and a good deal of practical engineering knowledge. In 1852 he left his employment and, much against advice, he established a sawmill in Brisbane, copying the necessary information about sawmilling from a penny cyclopaedia.

In the next few years logs for the sawmill came from various parts around Brisbane, some by bullock wagon and some at least part of the way by water. As far as the Maroochy district was concerned his milling activities certainly bought advancement.

His mill stimulated a demand for timber, and he took an interest in farming and cattle-raising. He kept timber prices low, however, in order to dominate the milling business from the North to the N.S.W. border and this meant that the timber getters received very little return for their labour.

He also planned a depot near the mouth of the Mooloolah River to handle the transport to Brisbane of logs from the Maroochy district, including the cedar Petrie had cut during his 1862 visit. He devoted a good deal of 1863 to these projects.

In 1863 Pettigrew had attempted to persuade Macalister, the Secretary for Lands and Works, to build a railway to transport logs from the Maroochy River to the Mooloolah River, but had been told he would have to build it himself.

Sometime earlier, he had made the acquaintance of James Low, a fellow Scot. He had received training both as a boat builder and a lawyer. In 1863 he would have been 35 years old, Pettigrew then being 37. The two were to become partners in more than one business enterprise.

In 1862 James Low visited the Mooloolah and Maroochy Rivers, and early the following year returned to Brisbane, where he helped Pettigrew add a stern wheel, an engine and boiler to the "Granite City" a sailing vessel, which the latter had purchased as a drogher for the transport of timber from the Sunshine Coast Rivers to Pettigrew's Brisbane sawmill.



In its day the drogher was a common vessel in Eastern Australia, but its history began in a very different and distant land. The original droghers were herring and mackerel boats, used around the coast of Holland and France. They differed from typical fishing boats, in that had room to dry the catch – hence the name.

In addition, they lengthened the vessel by eighteen feet. Arrangements were made for Low to buy a third share in the ship which had its name changed to the "Gneering" an aboriginal word meaning "black swan".

William Grigor, came into the picture in 1863, when the Mooloolah project began to take shape. He had partnered Low in a farming venture at Moggill and when the Mooloolah project began to take shape he and Grigor became partners again. The former acting as a storekeeper, and the latter supervising the transport of logs.

In the early days of cedar-cutting in New South Wales it had been the custom, after falling the tree, to cut the log into planks by means of a pit saw. Excepting where timber was cut for local requirements this method was not used in the Maroochy District, the logs being rafted down the various streams and drawn by bullocks to the Mooloolah River, where they could be loaded on to the "Gneering" for transport to Brisbane.

When the timber was close to streams, as was more often than not the case with cedar, the logs were rolled to the bank. However, if the logs were too far away to be rolled, bullock teams were used to snig them to the nearest stream. Their snigging tracks proved useful for travelling through the thick scrubs; and they explain why timber getters were able to travel in comparative ease through country which had given explorers so much trouble 20 years previously. Unfortunately, they also meant the beginnings of soil erosion in some areas.

After being brought close to the river bank, the logs were spiked with iron "dogs" and tied together with chains or vines (usually the latter) five abreast. Each group of five logs was tied to another five, until an extensive raft was formed. This had to be left in shallow water until high tide (or a fresh in the upper reaches above tidal waters) floated it downstream.

Someone would have to travel on the raft to keep it moving. It drifted on the running out tide and when the tide turned, the raft was pushed to the bank with a long pole and tied up till the tide turned again.

The timber rafts that came from Yandina would take about ten days to reach the sea. At one time the families of aborigines brought the rafts from Yandina. They built a temporary hut and lived on the raft, making a small fire on a layer of dirt. The fire was useful for cooking the fish they caught and also



"Gneering" (left) and the "Tarsbaw" right (also of Pettigrew's fleet) berthed at his wharf, downstream from Queen's Wharf, circa 1892. It can be seen clearly from this photo that the shape of the original Drogher is clearly defined. (SLQ image 647/40-2)

for making a thick smoke to keep the mosquitoes at bay.

What fun it must have been! Can't you imagine their friends swimming out to the raft in the (then) pristine waters of the river from the bank, enjoying a modern-day BBQ of the fish they caught and then perhaps scoring a free ride down the river.

On Chambers Island and on the north side of the river were long booms which caught the rafts and held them till the boats came from Brisbane to tow them away or dragged overland by bullock team to the Mooloolah River to be picked up.

This was where the boat the "Gneering" owned by Pettigrew, Low and Grigor came into play. It picked up timber from the depot on the Mooloolah River, and it also came into the Maroochy River, to collect the logs direct from Chambers Island.

After many trips it was wrecked and its "bones" were towed to Goat Island in the Maroochy River, where sometimes at low tide you can still see part of it. The Gneering Reef out from Mooloolaba is named after that sturdy little boat that our early settlers knew so well.

As the timber slowly became cut out near the water, the men had to move further away and haul the logs by bullock teams to the creeks. These snigging tracks they cut through the dense scrub opened up the country and made it easier for the settlers to move about.

The slopes of the Blackall Range are extremely steep and the timber getters on top built "chutes" down which the logs slid and hurtled to the bottom. "Lander's Chute Lookout" between Montville and Maleny commemorates Mr. Lander who had one such chute, although little of it remains today.

* In engineering, a dog is a tool or part of a tool, that prevents or imparts movement through physical engagement. It may hold another object in place by blocking it, clamping it, or otherwise obstructing its movement. Or it may couple various parts together so that they move in unison.

In its day the drogher was a common vessel in Eastern Australia, but its history began in a very different and distant land. The original droghers were herring and mackerel boats, used around the coast of Holland and France. They differed from typical fishing boats, in that had room to dry the catch – hence the name.



A bullock team passing down the main street of Maroochy 1915. Courtesy Nambour Heritage Library



David Low





William Pettigrew

BLI BLI ON MAROOCHY HISTORICAL SOCIETY INC.

Organisation No. IA 18938

Here Today ...to Collect, Preserve and Promote Local History





Meet us at the "Former Bli Bli School Residence" 94 Willis Road, Bli Bli
2nd, 3rd, 4th and 5th Monday February to December from 9.30am to 12.30pm
Other times are by appointment with President Ailsa Watson
0408 544 845 / 5448 4848

All Historical Society members, guests, researchers and the public are also welcome to join us on the 1st Monday of each month in the old Church Hall located at 89 Willis Road, Bli Bli from 9.30 a.m. Refreshments provided.

The School Residence was built in 1920 and is the oldest public building in Bli Bli.



BLI BLI UNITING CHURCH

10 Lefoes Road, Bli Bli

Sunday Church Services:

Morning Tea - 9.15am to 10.15am

Worship Services:

Morning Tea - 10.30am to 11.30am

Holy Communion - 1st Sunday of Month

Everyone is warmly welcomed. Visitors are always welcome

Café Lilac - Ladies Coffee Morning - 1st Tuesday of month

Craft Group - This is in recess until further notice

Mens Breakfast - BBQ Breakfast at Church -

2nd Saturday of month at 8.30am

Weekly Bible Study - Is in recess until 2022

Planning & Prayer Meeting - 1st & 3rd Saturdays at 9am at Church

HALL & CHURCH HIRE AVAILABLE -

CONTACT JOHN RANKIN ON 0458 215 250

BLI BLI SERVICES - SUPPORTING OUR LOCALS

To advertise contact ads@blibli.qld.au

A.C.G. Plumbing & Excavations.

We're Reliable! All aspects of plumbing, drainage gas fitting & free quotes. No job too big or small. Reliable, fast, friendly.

0414 227 471

Bli Bli

Mechanical Repairs

Experienced mechanic in Blanch Cres. For all your car troubles. Ring for an appointment. Friendly service.

5448 6851

CK Design

Dog Grooming

Professional Grooming Salon with a hand scissoring specialist. 41 Avocado Cres.

5448 4818

by appointment

www.blibli.qld.au



WHAT IS ON IN THE OLD HALL AND THE OLD CHURCH?

The Public Hall and the Old Church is the focus of many exciting and varied activities. For any enquiries or bookings call 0427 635 558 or email your enquiry to bookings@blibli.qld.au

PUBLIC HALL

	MONDAY	TUESDAY	WEDNESDAY	THURSDAY	FRIDAY	SATURDAY	SUNDAY
7.00am							
8.00am							
9.00am	MBK Dance Studios						
10.00am							
11.00am							
12.00pm							
1.00pm							
2.00pm							
3.00pm							
4.00pm							
5.00pm							
6.00pm							
7.00pm							
8.00pm							
9.00pm							
10.00pm							
11.00pm							

Bli Bli Yoga
Petra 0409 532 940

MBK Dance Studios
Hayley 0408 988 119

Dance Fever
Sandra 0432 980 432

Sundance Line Dancers
Heather 0407 174 591

MBK Dance Studios
Hayley 0408 988 119

Bli Bli Quilters
Liz 0408 312 713

MBK Dance Studios
Hayley 0408 988 119

Sundance Line Dancers
Heather 0407 174 591

Kelly Karate
Simon 0408 064 439

Maroochy River Country Music Club
Lynda 0409 588 939

Home Schooled Drama
Jodi
jdleevascook@gmail.com
Friday (School Term)

MBK Dance Studios
Hayley 0408 988 119

GKR Karate
Andrew 0407 695 005

MBK Dance Studios
Hayley 0408 988 119
(Term 1 only)

Sacred Embodiment
Sara
sara@sacredembodiment.com.au
Saturday (monthly)

OLD CHURCH

	MONDAY	TUESDAY	WEDNESDAY	THURSDAY	FRIDAY	SATURDAY	SUNDAY
7.00am							
8.00am							
9.00am							
10.00am							
11.00am							
12.00pm							
1.00pm							
2.00pm							
3.00pm							
4.00pm							
5.00pm							
6.00pm							
7.00pm							
8.00pm							
9.00pm							
10.00pm							
11.00pm							

MBK Dance Studios
Hayley 0408 988 119

Coast Life Success
(Connection & Mentorship Sessions for Teen Homeschoolers)
Maree 0419 929 771

MBK Dance Studios
Hayley 0408 988 119

Trudi Yoga
Trudi 0421 369 262

Bli Bli Community Association
3rd Tuesday
7.30pm - 9.30pm
Daniel 0427 635 558

Coast Life Success
(Connection & Mentorship Sessions for Teen Homeschoolers)
Maree 0419 929 771

Wayne Hewson Marshal Arts
Mark 0409 271 168

Church of United Spiritualism
Rosemary
0409 457 352

Didgeridoo Music Therapy
Caleb 0422 805 580
5.15pm - 7.30pm

Trudi Yoga
Trudi 0421 369 262
6pm - 7pm

Literacy Advance
Danielle 0417 880 550

Julie (Private Band Practice)
Julie 0457 070 131
Saturday / Fortnightly

Golden Grown Healing
Paul 0410 974 709
Random Saturday and Sundays

All information is correct at the time of printing

What's new in Bli Bli...



Do your research and compare our results to the other agents in Bli Bli!

We've received **740 offers** over **10 months**
equating to
\$562,393,486
(over half a billion!)



Ed



Natasha



Greg



Rachel



Tony



Matthew



Cameron

We are talking to more buyers than any other agency in Bli Bli.

Call us today - 07 5450 8111.