

# Bli Bli

BULLETIN

ISSUE 45 | WINTER 2022



"Our River Community"

Bli Bli Community Association - Supporting local community groups, businesses and the residents of the area

**MAKE YOUR WINTER WARMERS LOCAL THIS SEASON**

**INGREDIENTS**

- 1 smoked ham hock
- 1 potato, peeled & diced
- 500g McKenzie's Green Split Peas
- 1 large onion, diced
- 1 garlic clove, crushed
- 1 tbs olive oil
- 3 medium carrots, diced
- 2 large celery sticks, diced
- 8 cups water
- To taste, Natural Sea Salt
- To taste, Aussie Pepper
- 1 bay leaf

Ham Hock from Aussie Smokehouse in Warana

Potatoes from the Mary Valley

Saltt Salt & Pepper from Eumundi

**DIRECTIONS**

- Step 1**  
Prepare peas according to on-pack preparation instructions.
- Step 2**  
Heat oil in a large pot and saute onion and garlic for 2 minutes. Add all remaining ingredients. Cover and simmer for approximately 2 to 2 1/2 hours or until thickened, stirring occasionally.
- Step 3**  
Remove hock and prepare by removing skin and fat. Dice or shred ham and set aside. Discard bay leaf.
- Step 4**  
Puree soup or use a potato masher for a chunkier consistency.
- Step 5**  
Add ham back to soup and stir. Season to taste.

**TIPS**

Reserve some of the shredded ham and roughly chop fresh parsley to garnish soup before serving.

**Pea & Ham Soup**



**Bli Bli**  
"Our River Community"

The Bli Bli Public Hall & Community Association Inc is the parent organisation of Bli Bli's own local Magazine, distributed FREE to Bli Bli and the surrounding district.

PO Box 1, Bli Bli 4560

ADVERTISING  
ads@blibli.qld.au

Editorial contributions welcome  
editor@blibli.qld.au

Bli Bli Public Hall & Community Association Inc Meetings  
7.30 - 9.00pm

Third Tuesday each month  
Bli Bli Public Hall

All Residents are welcome.  
secretary@blibli.qld.au

Hall Bookings & Old Church  
Bookings: 0427 635 558

bookings@blibli.qld.au

Business Number 22132715

Design and Print  
BrandGrowth - 0431 771 059

Front cover image -  
Karen Simpson's Photography

**A MESSAGE FROM THE BLI BLI COMMUNITY ASSOCIATION**

Interesting looking back over old editions of the Bulletin, where in winter we celebrate drier conditions. How things have changed. As we all know the rainfall to the end of May was greater than our rainfall for all of 2021 and we still have 7 months to go. What more will this year bring?

Some things do not change. The onset of winter means that it's strawberry season and our very own local strawberry farm, McMartins is back open. It is clear that people still love getting out on the weekends and visiting farms and picking their own strawberries. With all the rain it has been a real challenge this season to have any strawberries available to be picked as they do not go well with rain. Hopefully the weather can hold up enough to ensure that McMartins and all our farmers in the area can grown their winter crops and provide the much needed produce to the Sunshine Coast.

Unfortunately some of our local community groups have experienced changes over the past little while and so where we used to have regular contributions to the Bulletin from Maroochy Wetlands Sanctuary group and various sporting groups in our community, that no longer happens. It is a struggle ensuring that all our not for profit groups can keep running and with a lack of assistance it makes it very hard to keep up with newsletters and social media campaigns. So if you have any spare time, then there are plenty of groups around that may be of interest which could do with some help just to ensure they keep going.

It was wonderful to be invited to the ANZAC Day service held at Halcyon Lakeside which was very well attended. A lot of great work is being undertaken to develop a Cenotaph at the end the Avenue of Honour that hopefully will be ready for ANZAC Day 2023.

We continue to hold our monthly community meetings on the 3rd Tuesday of the month which are regularly attended by our local Councillor Cr Maria Suarez which is a great way to be able to address any issues concerning our community.


*Next edition for Spring closes for submissions to the editor and advertising on Monday 15 August 2022*

**BrandGrowth**  
CREATIVE DESIGN STUDIO

**Bli Bli's favourite design studio!**

- LOGOS
- WEBSITES
- SIGNAGE
- PRINT
- MARKETING





**Dan PURDIE MP**  
Member for **Ninderry**  
Shadow Minister for Police and Counter Terrorism  
Shadow Minister for Corrective Services

📍 11 Heathfield Road, Coolum Beach QLD 4573 📧 PO Box 989, Coolum QLD 4573  
☎️ (07) 5406 7900 📧 ninderry@parliament.qld.gov.au 🌐 danpurdie.com.au  
📱 DanPurdieMP 📱 @DanPurdieMP 📱 danpurdie\_mp



**Councillor Maria Suarez**  
Division 9  
Environment and Liveability Portfolio

Phone: 07 5475 9810 Mobile: 0437 794 703  
Email: maria.suarez@sunshinecoast.qld.gov.au  
Mail: Locked Bag 72 Sunshine Coast Mail Centre Qld 4560  
[sunshinecoast.qld.gov.au](http://sunshinecoast.qld.gov.au)

**Sunshine Coast COUNCIL**  
Our region. Healthy. Smart. Creative.

## AN UPDATE FROM YOUR LOCAL STATE MEMBER, DAN PURDIE MEMBER FOR NINDERRY

### CELEBRATING VOLUNTEERS IN OUR COMMUNITY

Last month we celebrated National Volunteers Week, which served a timely reminder to give a shout out to the many local clubs and groups which operate in our area. From sports clubs, schools, seniors, community support and disability services, there are so many hard working volunteers who deserve our recognition. Having only recently caught up with the hard working committee of the Bli Bli Community Association, I used National Volunteer Week to acknowledge them, and many others, during a speech in Parliament. Check out the link on my Facebook page to listen to the speech.

Speaking of volunteers, another long serving volunteer in the local community is John Baird, whom I recently presented with a 50 year Gold Certificate for his service as a Justice of the Peace. John has been carrying out this important unpaid role in the local area for more years than I've been alive, and deserves our thanks and appreciation.

### GAMBLING GRANT SUPER ROUND

If you are part of a community club or group that has been impacted by a natural disaster in the past 2 years, you are encouraged to apply for a grant of up to \$100,000 in the Gambling Community Benefit Fund's super-sized Disaster Recovery Round. This round is open now, with applications closing on 15 July. Applications from non-affected groups are still welcome in this round, with grants capped at \$35,000. For more information visit [www.justice.qld.gov.au/initiatives/community-grants](http://www.justice.qld.gov.au/initiatives/community-grants).



### SUPPORTING LOCAL

Are you a member of a local group or club looking for a new fundraising opportunity? Earlier this year, I launched a new 'Supporting Local' campaign in conjunction with a number of local businesses, with hampers featuring their products. These hampers, which are valued in excess of \$400, were then donated to a local charity or group, who raffled it off to raise much needed funds.

This is a great way to not only showcase the diverse range of products that are manufactured locally, but also support our community. For more information, get in touch with my office.

### PARLIAMENT

With the State Budget due to be delivered later this month, I've been asking the Transport Minister for more information about the funds allocated to fix the Bli Bli bridge. While I welcome the initial investment of \$800,000 to get started on this overdue project, it is disappointing the majority of the funding won't start flowing for another two years. You don't need to be an engineer to see the bridge is long past its use by date, and I intend to keep lobbying the State Government to fast-track this much needed infrastructure upgrade.

*I look forward to hearing from you soon.*

**Dan Purdie MP**  
Member for Ninderry



## A WORD FROM CR MARIA SUAREZ DIVISION 9 - SUNSHINE COAST COUNCIL

### FUTURE SPORT IN BLI BLI

Nearly 100 hectares have been set aside for future sport and recreation at Godfreys Avenue, Bli Bli. It will be a number of years before facilities come out of the ground as a great deal of planning needs to take place and funding needs to be sought before this project officially begins. Council will keep you in the loop on any progress.

### NEW CENOTAPH PLANS AT PARKLAKES

Veterans in Step along with RSL Sunshine Coast have received a grant from Department of Veteran Affairs to progress plans to install a cenotaph at Parklakes. This is great news for the broader Bli Bli community and council is working with RSL Sunshine Coast to complete this project with an aim to be ready before ANZAC Day next year. Fingers crossed the rain doesn't delay this project like so many others of late.

### CLOSING SOON WildHeART STUDENT ART PRIZE

Does your child like to draw? Unleash their creativity and enter their art into the competition for native Australian plant and animal art and be in with the chance to win a share of \$3000. The WildHeART Student Art prize is a children's art exhibition with three age categories. Entries close soon on 17 July. Head to council's website for competition details.

### NEW LIGHTING AT TASOL STREET

New lighting will be installed along the pathway between Tasol Street and Castle Green Court, Bli Bli, to improve safety and visibility at night. This project was the result of a request from the community and will improve the safety for pedestrians walking from their homes to nearby shops and services in the evenings. The bollard lights are low in height to illuminate the pathway and minimise light spill for neighbouring residents. We expect these lights to be installed in June.

### GARDEN ORGANICS BINS ROLLING OUT

For residents who don't have one, your new garden organics bin will be delivered ready for the service to start from Monday July 11.

Garden organics bins are collected on the same day as your general waste bin and on the alternate week to your recycling bin. Please don't use your new garden organics bin until Monday July 11 - as it won't be collected before then. If you're unsure, search 'bin day' on Council's website to find your collection day. And please remember to put your bins out before 6am.

### WORLD ENVIRONMENT DAY FESTIVAL

The Sunshine Coast World Environment Day festival is a month-long program. There is a FREE Bringing back the oyster beds and ClimateWatch walk event at the Maroochy Wetlands Sanctuary on Wednesday 15 June from 9am to 11.30am. Alternatively bring the family to Doonan Planting Festival in Verrierdale where there will be plenty of family friendly FUN on Sunday 26 June from 8-11am. Tree planting, wildlife displays, live music and free food. Book now at <http://tiny.cc/1000treesdoonan>. More details on other events are available at [www.wed.org.au/2022program](http://www.wed.org.au/2022program)

As always, please contact council direct for any service requests such as road hazards, graffiti, dumped rubbish, parking, parks, potholes, roads, trees and waste collections. Contact details or service request forms are available at [www.sunshinecoast.qld.gov.au](http://www.sunshinecoast.qld.gov.au) or call 5475 7272

If you have any other issues or suggestions to discuss, please contact me on 5475 9810 or [maria.suarez@sunshinecoast.qld.gov.au](mailto:maria.suarez@sunshinecoast.qld.gov.au).

**Cr. Maria Suarez**  
Division 9 - Sunshine Coast Council

# ANZAC DAY 2022 COMMEMORATIVE SERVICE HALCYON LAKESIDE, BLI BLI

More than 200 homeowners from both the Halcyon Lakeside and Bli Bli by Halcyon Communities gathered to honour those service men and women who have lost their lives in military conflicts and those who are serving in the Defence Forces today. This year, the overriding theme of the Main Address was "We should never let their memories fade – we have our freedoms because of their sacrifices".

Our Guests this year included the Principal, Greg Myers, and three student representatives from the Good Samaritan Catholic College, Dan Purdie MP for Ninderry, Maria Suarez Councillor for Division 9 and four representatives from the Bli Bli Community Association Chris Baker, Ed and Cameron Hackenberg, Mac and Julie McKenzie.

Within each ANZAC Service, we focus on significant military anniversaries and this year we looked at 1942 with various attacks close to or on Australia's shores. The Fall of

Singapore (February), Bombing of Darwin (February) Midget Submarines in Sydney Harbour (May) and the Japanese landing at Milne Bay, Papua (New Guinea) (August).

The Veterans Group provided a pack of four Anzac biscuits to each household to recognize and say thanks for everyone's support during the year.

The Lakeside Social Club provided a wonderful luncheon where we were able to come together once more as a community.

Lest We Forget



## Activities associated with the Good Samaritan Kindergarten

On the Wednesday before ANZAC Day, several of the Veterans from Halcyon Lakeside Community in Bli Bli gave a presentation to the Good Samaritan Kindergarten children. We covered the importance of ANZAC Day, they were able to feel some medals, they tried on a slouch hat and looked at themselves in the mirror and we did some marching. At the end of the presentation, each child was presented with a red poppy.

Thanks to the Teacher Miss Kathryn.

On the Friday before ANZAC Day, the Veterans from Halcyon invited the children from the Kindergarten to join them along the Avenue of Honour in Parklakes Drive, Bli Bli. The children placed a small Australian flag and a red poppy next to each plaque on the eight rocks opposite their Kindy Building. Two very successful and moving occasions.

Lest We Forget



Unique  
tailor-made  
holiday packages

Specialising in  
Asia  
South Pacific  
Americas

Website: [luxurytravelitineraries.com.au](http://luxurytravelitineraries.com.au) | Email: [caitlin@luxurytravelitineraries.com.au](mailto:caitlin@luxurytravelitineraries.com.au)

## Bli Bli Dental

**P: 5448 4811**  
Level 3, Building 2,  
310 David Low Way, Bli Bli  
[reception@bliblidental.com.au](mailto:reception@bliblidental.com.au)  
[www.bliblidental.com.au](http://www.bliblidental.com.au)

*New patients welcome*

**Child Dental Benefit Scheme**  
Bulk Billed Here

Contact us to check eligibility

---

**10% SENIORS DISCOUNT\***

---



## MISSION STATEMENT

Bli Bli State School inspires children to confidently contribute to our dynamic world through strong foundations of commitment, creativity, character and community.

## A GREAT PLACE TO LEARN AND PLAY

It is my pleasure to lead this amazing school, with our continued focus on academics, social and emotional wellbeing and active participation in all facets of schooling.

Our students are working hard in our classrooms and their efforts continue to be rewarded with improved learning outcomes, with high quality results being achieved across each learning area. We have also seen a number of major school events occur this term including ANZAC Day commemorations, NAPLAN testing, choir performances, excursions and incursions. We have also had our school photos recently, with many smiling faces ready to be captured in class, group and individual photos.

Our staff are currently heavily engaged in deepening our understanding of the Australian Curriculum, with a new version just being released. During our recent 'twilight' professional planning session, our 21st Century Curriculum team consisting of our Head of Curriculum and teachers representing each year level, delivered a powerful and engaging presentation to further our knowledge and understanding of the layers involved in the curriculum. Our goal is to ensure we as a school develop units of work that meet not only the curriculum demands but also engage our modern learners in a meaningful and engaging manner. We want to ensure that our children are meeting their academic potential.

Our staff, students and community demonstrate a strong commitment to learning and wellbeing, which makes Bli Bli State School a great place to learn and play.

**Monique Pfingst**  
Principal



## The right choice for Prep in 2023... enrol with us

- It is never too early to join our school community.
- Join us on Facebook.
- Participate in our Playgroup - each Tuesday and Thursday morning from 8.30am.
- Book into a **School Tour**. Come meet our team and enjoy our great school for yourself.
- Email us at [enrol@bli bliss.eq.edu.au](mailto:enrol@bli bliss.eq.edu.au) and lock in your enrolment.

*We look forward to your family joining our school community.*

Enrolment enquiry email: [enrol@bli bliss.eq.edu.au](mailto:enrol@bli bliss.eq.edu.au)



Book the family  
on a school tour



I'm going to  
**Bli Bli**  
STATE SCHOOL



## THE ARTS LANDS IN Bli Bli STATE SCHOOL

In an exciting new addition this year, Bli Bli has added a dedicated Arts program to compliment the already strong Music component. Through the grades, the students are growing their understanding and skills of different areas of The Arts.

Drama and pencils, clay and canvas combine to great effect, resulting in choreographed routines, silent drama scenes, claymation sculptures, original advertising posters and colourful landscapes. The students of Bli Bli have shown that they are creative, imaginative, expressive and talented, and eager to share their works in showcases coming soon to the school.

Further to this, the students of Bli Bli State school are strutting their stuff, mastering the mic and singing their hearts out, in the current edition of *Bli Bli's Got Talent*. Currently in the semi-finals, there has already been a plethora of talent on display, showing that at Bli Bli State School, creativity and expression is found in all the students, and now it's on centre stage!

**Mr Ben McClure**  
Teacher – The Arts and Prep



## Bli Bli SCHOOL TOUR

EXPERIENCE WHAT Bli Bli STATE SCHOOL HAS TO OFFER YOUR CHILDREN ON A TOUR OF OUR GREAT SCHOOL.

If you are considering enrolling at Bli Bli State School, we encourage you to visit the school for one of our regular school tours.

After your campus tour you are welcome to stay and chat with our staff. All tours commence from the administration building of the school.

Book your spot online by using the above QR Code.

### TOUR DATES

- 9:15am Friday 22 July
- 5:30pm Wednesday 24 August
- 9:15am Tuesday 6 September



## ENROLLING AT Bli Bli STATE SCHOOL

Learn and play in our friendly school community

We provide a nurturing and supportive environment for your children where their individual needs are respected and personalised learning approaches allow for each child to have the opportunity to reach their full potential.

Parents wishing to enrol at Bli Bli State School will need to demonstrate that the student's principal place of residence is within the schools catchment area, or submit an Expression of Interest to enrol. This form can be found on our website.

Please check out our website for details on applying for enrolment at Bli Bli State School.  
[www.blibliss.eq.edu.au](http://www.blibliss.eq.edu.au)



# NEW TERRACED DECK AT MAROOCHY RIVER GOLF CLUB

There's nothing better than sitting down for a great meal with family and friends, watching the sunset. The new terraced deck at Maroochy River Golf Club is the place to be, either after golf or having a relaxing meal in a family friendly atmosphere. It is great to see and hear of so many locals utilising the area with expansive views to Mount Cooloom. This completes renovations to the Cane Cutters Bar & Bistro, where families can come and enjoy the club facilities in a superb environment.

Bli Bli and nearby residents may have seen extra activity happening at the Maroochy River Golf Club since the big wet hit us. The club suffered some flooding on the golf course but our expert ground staff and volunteers were able to get the course back in tip top shape very quickly.

## CANE CUTTERS BAR & BISTRO

If you are thinking of having a party, (and we are currently catering for every type of party – children's & adult birthdays, special occasions, work parties), the Cane Cutters Catering crew can offer all sorts of options for you. Menus are on the website.

Families, as well as people of all ages, love coming out in the fresh air, sharing some value time, having some drinks, staying for a pizza or snack.

The Friday night raffles are proving very popular, with raffle prizes up for grabs from 7pm. These include, meat trays, breakfast trays, food and beverage vouchers and mini golf vouchers. After the raffles, the membership draw starts, where members who are present, have the chance to win up to \$8,000. The Courtesy Bus also runs on Fridays from 5pm to bring patrons to and from the club.

With easy parking the Cane Cutters Bar & Bistro is open every day for mouth-watering lunches and dinner with a great menu!

## MINI GOLF

Thousands of guests at the Maroochy River Mini Golf course (adjacent to the Clubhouse), have been swarming in to play 18 holes of mini golf with specially designed putters and balls. The guests have been enjoying the Cane Cutters Bar & Bistro facilities and taking in the great views of the golf course to the North, with Mount Cooloom on the horizon, as the sunset's glistens across the water in a friendly family atmosphere, standing around the wine barrels on the shaded terrace.

For those who are still not sure what mini golf is, it is a supercharged version of the old 'putt putt' game but without clowns faces and

*Maroochy River Golf Club – The new terrace deck is a stunning feature of the Cane Cutters Bar & Bistro.... The place to be!*

animal obstacles etc... Instead, it has classy, landscaped humps & hollows, delightful water features and pretend sand traps. Overhead lighting for the evening players and great background music make the mini golf so much better! There are 18 holes with two challenge levels to choose from.... easy one for relaxed fun players and a harder one for players who are looking for a bit of a challenge.

Thursdays is Mini Golf Putt 'n Parmi for lunch or dinner. Get the family together or call on your mates, and let's play Mini Golf. Enjoy a beautiful meal at the Cane Cutters Bar & Bistro before or after you hit the course, all for only \$35.00 per person. Who doesn't love a good Parmigiana with family & friends for lunch or dinner? Here's what is included - 18 holes of Mini Golf, Chicken Parmigiana, Chips & Salad for Thursdays only.

The mini golf course is open from 9.00am every day until late. Game costs are just \$17 for adults, children \$12. A family of 4 is only \$45.00 7 days a week. A special Friday Family Pizza Deal is only \$70 and provides mini golf games for 2 adults and 2 children (extra children only \$5-max 2 extra), an 11 inch pizza, bowl of hot chips and jug of Schweppes soft drink! It's a great thing to do with the family before the raffles start.

There is also a fully developed grassed driving range open every day also evenings from Wednesdays, not to mention 18 holes of championship golf to be played as well. Bring your sticks, bring your family, it's all here at MRGC.

For table reservations or to book the Courtesy Bus call Reception on 5373 1000. Table bookings are recommended (particularly on Friday nights) so please email bookings@maroochyrivergolfclub.com.au. For more information on club facilities, games or mini golf, go to maroochyrivergolfclub.com.au.

**Bli Bli and nearby residents are always welcome (become a social member for just \$5) and receive club discounts at the Cane Cutters Bar & Bistro. Hope to see you soon....**



# SPECTACULAR VIEWS



- Friday Night Raffles & Members Draw
- Courtesy Bus running Friday nights
- New mouth watering menu
- Family friendly atmosphere
- 2021 Golf Club of the Year

- Adults: \$17.00 each
  - Child: \$12.00 each (<18 years of age)
  - Family Pass: \$45.00 (2A+2C)
  - Fun for the whole family
  - Open 7 days - 9am until late
  - Great food and drinks available
  - Family Putt n Pizza Deal: \$70.00
- visit [maroochyriverminigolf.com.au](http://maroochyriverminigolf.com.au)

Let's Play

admin@maroochyrivergolfclub.com.au ✉ [www.maroochyrivergolfclub.com.au](http://www.maroochyrivergolfclub.com.au)

📍 374 David Low Way, Bli Bli Qld. 4560 ☎ (07) 5373 1000



# NAMBOUR CHRISTIAN COLLEGE

We invite you to book  
a personal **CAMPUS TOUR**

## Valuing what matters most.



[www.ncc.qld.edu.au](http://www.ncc.qld.edu.au)

2 McKenzie Road, Woombye QLD 4559

Call us today 5451 3333 | [enrolments@ncc.qld.edu.au](mailto:enrolments@ncc.qld.edu.au)

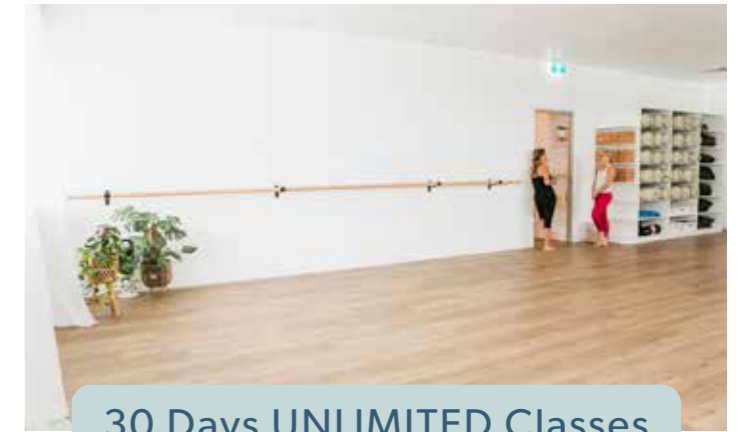


## AKTIVLIVING

### YOGA - BARRE - PILATES ALL LEVELS WELCOMED

**Experience Aktivliving Studio**

Bookings: [mindbodyonline.com](http://mindbodyonline.com)



30 Days UNLIMITED Classes

## for ONLY \$59

- Yin and VinYin Yoga
- Vinyasa, Gentle, Slow and Power Yoga
- Adaptive Yoga
- Meditation and Breath
- Pilates
- Barre HIIT
- Barre
- Mobility and Strength
- Stick Yoga
- Kids Yoga
- Workshops and Retreats

Mobile 0459 900 936 | Email: [aktivliving@gmail.com](mailto:aktivliving@gmail.com) | Level 3, Bldg 1, 310 David Low Way, Bli Bli Bli Village Centre (F45 End of the Building)



Quality - Reliable - Efficient

# AML PLUMBING & GAS

*Sunshine Coast & Surrounding Area*

### LOCALLY OWNED AND OPERATED

DOMESTIC - COMMERCIAL - INDUSTRIAL

- General Plumbing and Gas Maintenance
- After Hours and Emergency Service
- Senior Discounts
- Renovations
- Blocked Drains and Burst Pipes
- Taps and Toilets
- Gas Compliance Certificates
- Hot Water Systems

### SPECIALISED SERVICES

- Backflow Prevention Devices
- Thermostatic Mixing Valves
- Emergency Eye Washes and Showers
- Drain Camera and Locator

Call **Mitch** Today  
**0407 966 665**

*LIKE US ON FACEBOOK & CHECK OUT OUR WORK*



Master Plumbers'  
Association  
of Queensland

Member

QBCC Licence  
No. 15037335  
No. 1293749

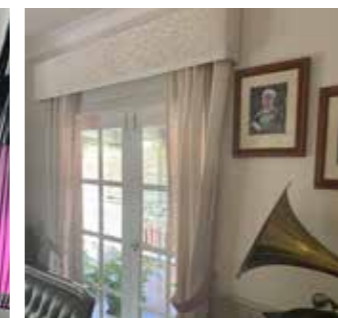
Email : [info@amplumbing.com.au](mailto:info@amplumbing.com.au)

Website : [www.amplumbing.com.au](http://www.amplumbing.com.au)

ABN : 11 615 207 791

## KEEP THE WARM IN THIS WINTER WITH OUR GREAT RANGE OF BLOCKOUT CURTAINS AND BLINDS

*Whatever your need, we've got you covered.*



**Darren's** **BLINDS**  
**SHUTTERS & CURTAINS**

Sunshine Coast

### Local business, local products

### We're as local as you can get!

*And all our curtains are locally made*

Darren's expertise will guide you through your choices,  
book now for a free onsite quote.

**0476 327 736**

[www.darrensblindsshutterscurtains.com](http://www.darrensblindsshutterscurtains.com)

# IS THIS THE ANSWER FOR BLUE HEART?

In the Autumn edition of the Bulletin, a question was posed as to the managing of the land in the "Blue Heart". The Council have been very busy buying up land within the Blue Heart area spanning from the Motorway up to Coolum roundabout and west to Valdora and Bli Bli in the south. The challenge for Council with much of this land is what are they going to do with it in the long term and how are they going to manage the land.

Having acquired the land, the question is will Council regularly maintain the land or will they just leave it to "go back to nature". We know that a lot of the land in the area that is not continually maintained and so has become a haven for groundsel which is a terribly invasive noxious weed. If Council does not regularly maintain the land that they have acquired, then it will be overrun by this weed which will then impact on all other properties.

So the question is locking up this land the only option. Over many years there have been all sorts of studies into what you could grow within the Blue Heart area other than sugar cane. Despite all these studies there has been no real solution.

But is there a solution? A native plant to the area that grows naturally through a lot of the coastal forests and along the motorway is a tree which can grow to in excess of 3 metres in

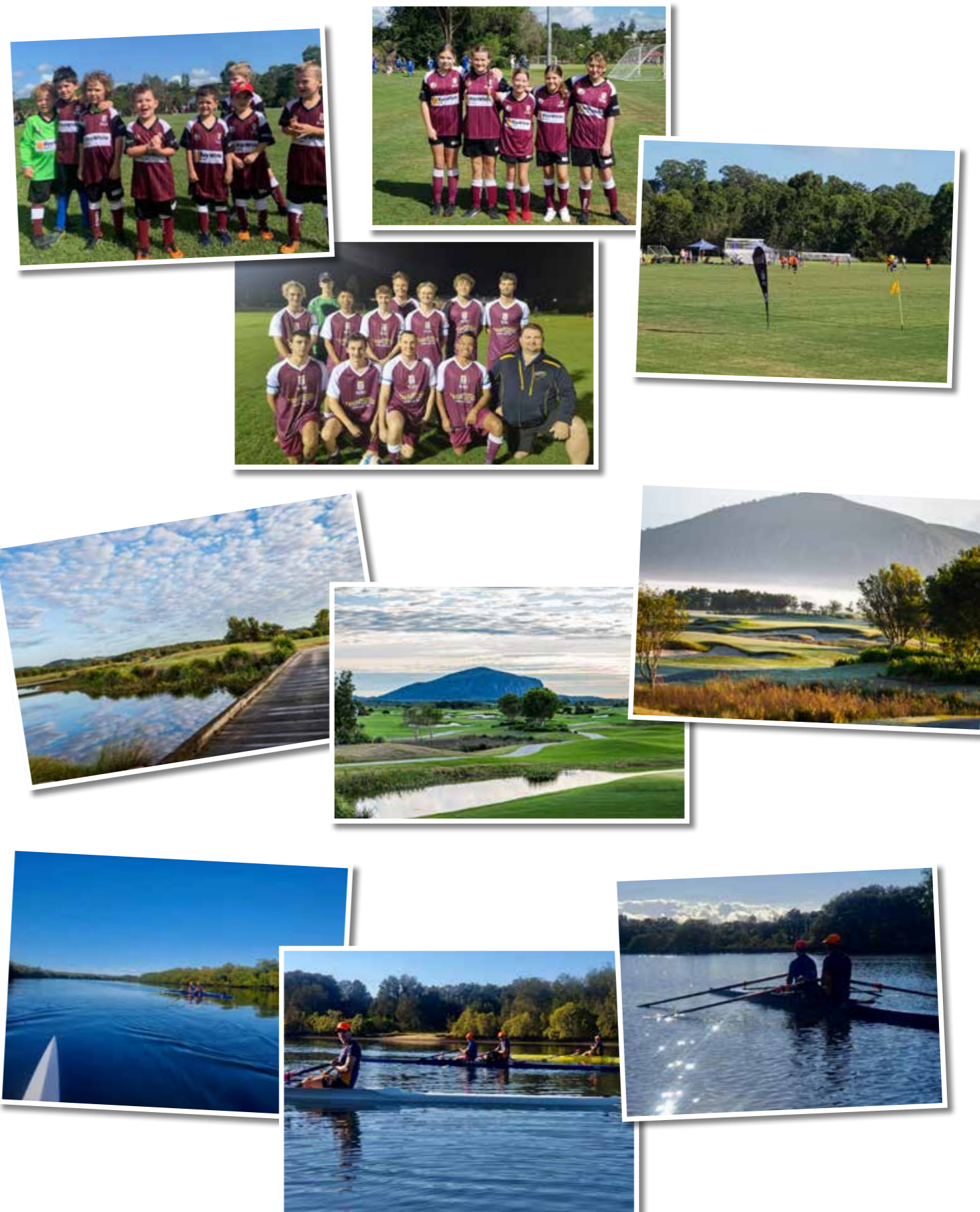
height known as *Leptospermum polygalifolium* or otherwise known as the Jelly Bush. It is a very hardy tree which flowers in September/October with masses of white flowers which is a great food source for bees. The tree can handle wet feet and in fact grows well with continual moisture. The tree has been able to handle the regular inundations from wet weather including being completely submerged for up to 2 weeks and water around its feet for up to a month. So the early signs are that this tree which if planted in large numbers could provide a great food source for bees as well as helping with carbon capturing.

Some of the Jelly Bush's are high in Dihydroxyacetone (DHA) levels and the higher the levels the higher the medicinal grade honey and superior genetics that follow. The demand for medicinal honey has grown considerably in recent years.

So the Jelly Bush may be an answer as to what to do with some of the open spaces. Rather than locking it up and leaving it, perhaps plantations of the tree growing in the area will not only be a great food source but environmentally friendly and ensure that the land is regularly maintained.



# OUT & ABOUT WITH BLI BLI SPORTING CLUBS



**LOCAL INDEPENDENT TOWING SERVICE**  
**FAMILY OWNED & OPERATED**  
**FULLY INSURED TILT TRAY TRANSPORT**  
**BLI BLI 0435 353511**

Mention this advert for 'locals only' discount  
[a2btows@gmail.com](mailto:a2btows@gmail.com) abn. 32747687489





# GOOD SAMARITAN CATHOLIC COLLEGE

## IS A BUSY PLACE AS WE CONTINUE TO GROW AND DEVELOP OUR COLLEGE.

### SENIOR SCHOOLING

In 2023, students will commence Year 11 at the College for the first time. The College Leadership and teaching team is working hard developing strong pathways for the students. During Year 10, students chose from 27 elective subjects as a lead into the planning process for Years 11 and 12. Along with the strong core curriculum (Maths, Science, English, Humanities, Health and Physical Education, Religious Education and The Arts), the elective subjects allowed students to focus on core interests and explore other opportunities. The College will offer diverse ATAR subjects for University and further student entry, focussed Traineeships, Vocational Education courses and School Based Apprenticeships. These are exciting times for our first seniors who will graduate in 2024.



### BUILDING PROGRAM

Despite the wet weather and delays due to supply chain issues, the major building program taking place is moving ahead and will be finished in time for the 2023 school year. The College is constructing 27 new classrooms, 9 specialist rooms (including hospitality, science, drama, visual arts and industrial technology and design rooms), student resource centre (including P-6 and 7-12 library spaces, technology hub, support and counselling services, pastoral services and careers advice), expanded staff facilities, over 100 carparking spaces and associated facilities (toilets, covered space and landscaping). All new facilities will be air-conditioned and will feature state of the art technology and educational furniture. The facilities will enable our students to access all aspects of the curriculum while benefitting from expert teachers in first class facilities.



### 2024 ENROLMENT TIMELINE

- February 2023 Open Days & Principal Tour
- Friday 24 February – 2024 enrolment applications close
- March/April 2023 – Enrolment interviews for Prep 2024 & Year 7 2024 commence
- End of April 2023 – Enrolment offers made for 2024 placements in Prep and Year 7

### ENROLMENT

The College is designed as a Prep to Year 12 College with three classes in Prep to Year 6 and five classes in Years 7 to 12. Demand for enrolment is extremely high with families keen to ensure their children benefit from the Good Sams experience. Extremely limited places exist in some year levels for 2023 and applications are now open for 2024 and beyond. It is essential that parents complete an online application form now if they want their child to be part of this thriving educational community.

### THE ARTS AND SPORT

As the College grows, so do the opportunities for students in sport and the arts. The Good Sams Arts Department offers co-curricula opportunities for students in Dance, Drama, Music and Visual Arts as well as the support area of Technology set-up. Our students represent the College at eisteddfods, festivals and displays with the highlight of the Arts year coming with the “Pulse Arts Festival” in September. Good Sams sporting teams are also making an impression on the fields and courts. Netball, Rugby, Soccer and Touch teams are active in Sunshine Coast competitions while our students are involved in a myriad of other interschool sports and competitions. The College also supports students in their endeavours outside of school in areas such as surf lifesaving and music.



Our students represent the College at eisteddfods, festivals and displays with the highlight of the Arts year coming with the “Pulse Arts Festival” in September.



Our promise is to help your child excel at the College and in life, contribute to their community and lead the way in our changing society.



**GOOD SAMARITAN CATHOLIC COLLEGE**  
JOURNEY WITH COMPASSION

*Our promise is to help your child excel at the College and in life, contribute to their community and lead the way in our changing society.*



Catholic co-educational P-12 College

High quality learning in a faith filled community

Valuing excellence, integrity, justice and hope

Enrolments Open for 2024 Prep & Year 7



P 5374 8800  
E [psblibli@bne.catholic.edu.au](mailto:psblibli@bne.catholic.edu.au)  
W [www.goodsamaritan.qld.edu.au](http://www.goodsamaritan.qld.edu.au)  
f Good Samaritan Catholic College

# MCMARTIN'S STRAWBERRY FARM

The McMartin's strawberry farm is one of the last pick your own strawberry farms left on the Sunshine Coast and it is right here in Bli Bli. The McMartin's Strawberry Farm was first purchased in 1945 and in those years the predominant industry was sugar cane. They also ran a dairy on the higher ground, but when the Mill in Nambour closed they had to focus on an alternative source of income and so strawberries became their main farming pursuit.

In addition to strawberries you will see many different other types of fruit and vegetable crops growing on the slopes of the farm and over on their land near Parklakes 1. In particular you will see lychees, mulberries, figs, custard apples and persimmons all of which are used in the ice cream or jams that they produce for sale.

The farm is open 7 days per week from May until mid October which is a big task given they also attend the Yandina and Fisherman Rd markets each week and the Nambour Show and Garden expo.

You can visit the farm anytime between 8.30am and 4.30pm and you can pick your own strawberries or simply buy them from the shop and enjoy an ice cream or coffee while the kids play in the playground. The shop closes at the end of the season in mid October so don't miss out! phone 5448 4912 [www.mcmartins.com.au](http://www.mcmartins.com.au)

Address end of Sports Road Bli Bli next to Wetlands Sanctuary.



## McMartin's Strawberry Farm



### PICK YOUR OWN STRAWBERRIES

You can choose to either buy from the fridge or pick your own (PYO) strawberries.

HOME OF  
STRAWBERRY LANE  
ICE CREAMERY

**CAFE** - serves devonshire teas with delicious home made scones, barista coffee, smoothies, sundaes, light lunches and of course our award winning ice cream. We cater for group morning teas up to 50 people, so why not make your next morning tea outing to the Strawberry Farm. You can sit back and relax in the tranquil surroundings while the children play on the playground.

**MARKETS** - you can find us at the markets  
Saturday - Yandina  
Sunday - Fishermans Rd, Maroochydore

Open 7 days a week | 8.30am to 4.30pm June till October

Ph (07) 5448 4912 | [www.mcmartinsfarm.com.au](http://www.mcmartinsfarm.com.au)

The end of Sports Rd, Bli Bli, QLD | Beside the Maroochy Wetlands Sanctuary

**YOUNGS**  
ELECTRICAL CONTRACTING

**Electrical & Airconditioning**



Call Dale

New Homes  
Renovations  
TV & Data  
Hot Water Repairs  
Free Quotes

**0418 275 429**  
Based in Bli Bli

**Taps & Toilets**  
Plumbing Services

Jamie Younger  
Plumber

Phone: 0404 030 796  
PO BOX 143, Bli Bli QLD 4560  
Email: [tapsntoiletsplumber@bigpond.com](mailto:tapsntoiletsplumber@bigpond.com) qbcc 1230307

TAPS | TOILETS | HOT WATER UNITS | BLOCKED DRAINS

**Scott Murchie**

QBCC Licence No 069485

**PAINTING & DECORATING**

- All Areas • New Homes • Repaints
- Insurance Work • Free Quotes

QUALIFIED TRADESMAN  
ALL WORK GUARANTEED

Mob: **0419 779 822**  
[ssmurchie@westnet.com.au](mailto:ssmurchie@westnet.com.au)



The Bli Bli market is booming...  
the buyer activity is through the roof!  
Our results speak for themselves.

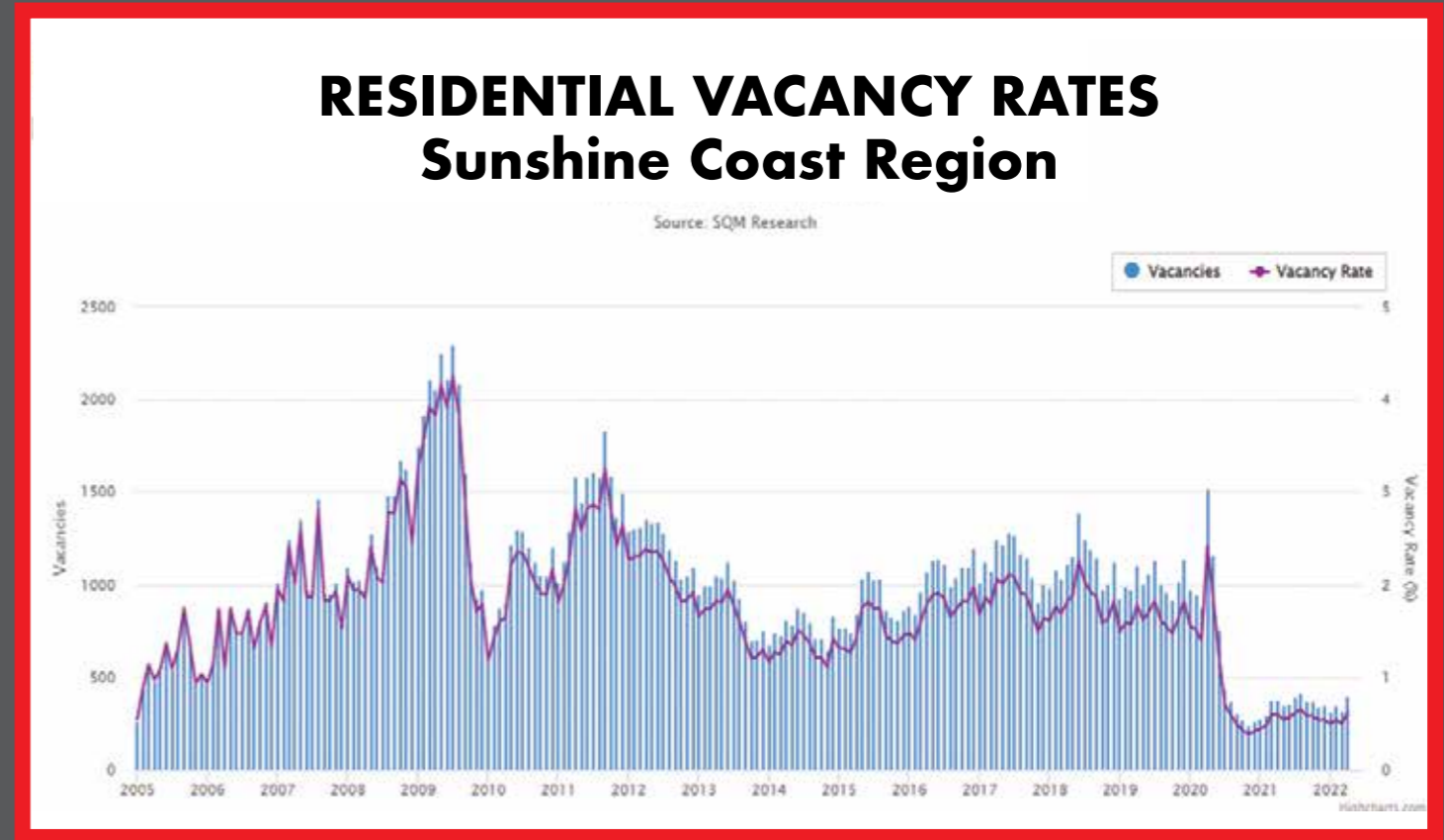


**How Much Is  
Your Home  
Worth?**

Call For A  
**Free Appraisal**

Jason Burns - 0417 762 001  
jason@firstnationalriverside.com.au

**THE TIME TO RENT  
YOUR PROPERTY**



**LET US TAKE THE STRESS  
OUT OF MANAGING  
YOUR OWN PROPERTY**



**10 DAYS OF UNLIMITED HIIT FOR \$10!\***

**You'll never get bored when you workout with us with new cardio, strength and fusion sessions daily. Meet new people, get fast results and have fun with J Series! Get 10 days for just \$10\***



- ✔ Burn fat fast. Seriously fast.
- ✔ Adaptable to suit any fitness level
- ✔ Short 30min workout
- ✔ Fun group environment
- ✔ Pumping music!
- ✔ Friendly & supportive Coaches

**Jetts Bli Bli**  
 Level 2 (next to the hairdresser)  
 308-312 David Low Way  
 Bli Bli QLD 4560  
 Instagram: @jettsbllibli

**BLI BLI'S MOST LOVED GYM.**



# THE IMPORTANCE OF MAGNESIUM

WE HAVE ALL HEARD OF IT, BUT DO YOU KNOW HOW IMPORTANT IT IS FOR US? MAGNESIUM, IT IS INVOLVED IN MORE THAN 600 REACTIONS IN THE BODY. INCLUDING:

- Muscle movements helping the muscle to contract and relax. (Epsom salt baths aren't just for softening the skin!)
- Protein formation, creating new proteins from amino acids.
- Gene maintenance: helping created and repair DNA and RNA
- Nervous system regulation: regulating neurotransmitters, which sent messages throughout your brain and nervous system.
- Energy creation: helps convert food into energy.

About 60% of the magnesium in our bodies is found in our bones. The rest is in the muscles, soft tissues and fluids such as blood. It is found in every cell in our body. Pretty important hey?

Lower levels of magnesium may be associated with:

- Loss of appetite
- Fatigue and weakness
- Muscle spasms (wrestles legs)
- Hyperexcitability
- Headaches
- Osteoporosis
- Diabetes
- Depression



Most of us get our magnesium from our diet. Foods such as Pumpkin seeds, chia seeds, spinach, almonds, cashews and almonds are good sources of magnesium. However a US study found that about 50% of adults get less than the recommended daily amount.

Combining this decreased intake with things that cause magnesium deficiency such as alcohol consumption in excess, some medications, excessive exercising, long term vomiting and diarrhoea, along with other health conditions such as Crohn's, type 2 diabetes and kidney problems can leave us feeling flat and sore.

Ensuring we have a well balanced diet is the best way as always. However, supplementation is one of the fastest and easiest methods of insuring we get adequate magnesium in our diet. Ensure you intake sufficient water in your day, eat right, move right and be well.

As always consult your health care provider before you instigate any new supplements or medications into your diet.

ARC Active Rehabilitation & Chiropractic  
 now open in Bli Bli

**NEW CLIENT SPECIAL**  
**\$59 initial consults**

for the month of July and August\*  
 First time clients only

*Everyone gets treatment on their first consult.*

ARC Active Rehabilitation & Chiropractic has been in practice for over 40 years. They have opened a new premises at Bli Bli Village. We offer, Chiropractic, Rehab, Acupuncture and longer consults are the norm.

Phone 5408 4384

Bli Bli Village Town Centre  
 Level 3 (Tower 1) Suite 306



\* Terms and conditions apply

# AS THE TEMPERATURE DROPS

As the weather starts to cool off, you may find yourself reaching for the slippers, a fluffy blanket or a soft, warm kitten to cuddle. Despite their furry coats and feathers, our canine, feline and avian fiends also feel the cold and it is important that we remember this as the temperature drops.

On colder nights, ensure that all pets have somewhere cosy and warm to shelter and rest. Consider bringing outdoor pets inside, providing heated bedding or a kennel lined with warm blankets, or decking them out in a stylish coat. Ensure that indoor pets also have access to soft warm bedding, remembering that older pets may struggle to jump or climb into elevated beds. Feathered friends should have access to a warm, sheltered roost, cage or aviary with a heat lamp if necessary. Smaller birds in particular can be very susceptible to cold, and so special care should be taken to ensure adequate warmth is available to them should they start to feel chilly.

For older pets, Winter can mean an increase in the pain and discomfort felt from osteoarthritis.

Our furry friends are generally much more stoic and tolerant of pain that we are, and will often carry on despite their discomfort, suffering silently unbeknownst to us, their owners. While you may not see your dog massaging creaky knees or your cat hobbling around with a walking stick or reaching for a crocheted knee rug, here are some clues to look out for that might suggest they are suffering from arthritic pain.

- Stiffness or difficulty rising from lying or sitting, particularly after periods of rest.
- Reluctance to jump, particularly in cats.
- Increased periods of rest and immobility.
- Consistent licking or grooming of joints.
- Reduction in play behaviours.
- Limping or favouring limbs when walking.
- Decreased tolerance of exercise.

Fortunately, there is lots that we can do for our pets to help slow down the progression of joint disease, manage pain levels and increase longevity in our precious pets. Supplements, injections and various pain relief medications are safe, simple to administer and can make a huge difference to our pets quality of life.

Get in touch with us if you would like to bring your pet in for an arthritis consult. We would love to be able to help you make life more enjoyable and comfortable for your elderly pet.



## Bli Bli Veterinary Surgery

**KEEPING PETS  
HEALTHY FOR OVER  
27 YEARS**

2 Kennedy Road, Bli Bli  
Ph: 5448 5055  
Book Online at [www.bliblivet.com.au](http://www.bliblivet.com.au)




Little Sprouts Dinosaur Dig

## Welcome TO PREMIUM CHILDCARE

### WE DO THINGS differently

**What is premium childcare?**

- Oversized rooms
- Chef prepared meals
- Large nature based playground
- Health and wellness program
- Bush kinder project
- Computer coding & programming
- Foreign language lessons
- Free monthly mother and baby clinic
- Cooking experiences in dedicated demonstration kitchens
- Dinosaur fossil dig & Waterpark
- Family owned and operated
- Parent lounge with barista quality coffee
- **Little Sprouts welcomes our very own Centre Chaplin, Alyssa available to the Little Sprouts community**

At Little Sprouts Premium Childcare we believe every day is a precious learning opportunity and children need real experiences with mud, trees, fresh air, puddles and pets in a nature based environment driven by children, families and passionate educators.

**RATED EXCEEDING NATIONAL QUALITY STANDARD**

Welcome to our Bush Tucker Garden



# CHAIRMAN'S ELITE

PERFORMER

2021 - 2022  
TOP 1% OF THE RAY WHITE GROUP!

Sunshine Coast  
Number 1 Ray White  
Sales Person

#1 Number - Sales

#1 Number - Value

2021/2022 - Elite Performer  
2020/2021 - Elite Performer  
2019/2020 - Elite Performer  
2021 - Agent of the Year -  
Bli Bli & Sunshine Coast  
2021/2020/2019/2018 -  
Sunshine Coast - Number 1  
Ray White Sales Person



RayWhite

Thank you to my Community for the ongoing support!

Natasha Hackenberg  
Ray White Bli Bli

0401 601 691

natasha.hackenberg@raywhite.com



Bli Bli



# The Edgewater Village Spring Fair IS BACK

10th September 2022

7.00am - 12.00noon

171 David Low Way, Bli Bli

On Saturday 10th September at 7.00am our Village will be transformed into a fabulous market place with many stall holders displaying their wares - homemade produce, craft, trash and treasure, books, Knick knacks, plants, clothing to name just a few.

There will be a raffle, BBQ serving breakfast burgers and hot dogs, and a very tasty morning tea.

Our wonderful Bli Bli School Choirs will be here together with the Edgewater Singers to entertain us, they are always a feature of the morning's activities.

Market stall holders, if you would like to be a part of the day, bookings are now being taken for stall sites. Cost is \$20.

If you are interested, please phone / email Marilyn on 0407 886 581 mazread49@gmail.com.

Keep the date free and we look forward to seeing you at Edgewater Village on 10th September 2022

## NORTH SHORE Seafoods

Local fresh & cooked seafood

**DAILY SEAFOOD**  
Cod, Snapper, Coral Trout, Whiting, Orange Roughy, Barramundi, Salmon, Dory, Mixed Reef and Flake

**HOME MADE FRESH DAILY**  
Potato scallops, calamari, prawn cutlets, crumbed oysters, battered fish bites, battered sea scallops & mussels  
also battered savs... pineapple fritters...  
**Burgers > Seafood Packs**

Proudly supporting the local fishing industry

Seafood Platters available on request

Like us on Facebook

Wide selection of other fresh local fish caught daily. Ask us what our daily catches are.

We pride ourselves in supporting our LOCAL FISHING INDUSTRY & LOCAL FARMERS for our fruit & veg!  
So why drive when we have it all right here?

Also Available Daily, Fresh Oysters, Scallops, Prawns Cooked and Green, Squid and Mussels.

Ph 5448 7755  
Shop 1/708 David Low Way Pacific Paradise  
Open 7 days 11am - 7pm

# BUYING NOW

GOLD JEWELRY & GOLD COINS COINS: CROWNS, 1966 ROUNDS, FLORINS, SHILLING, OTHER SILVER COINS

<p>Broken or unwanted jewellery or coins sitting in a drawer?</p> <p>Are you no longer collecting?</p> <p>Are the family not interested?</p> <p>Would the money be of more use?</p>	<p><b>GOLD COINS</b></p> <ul style="list-style-type: none"> <li>Australian \$200 Gold Coins</li> <li>Sovereigns</li> <li>Half sovereigns</li> <li>World proof coins and sets</li> <li>Commemorative coins</li> <li>Gold Coins: mounted, holed, or worn</li> <li>Gold medals and fobs</li> <li>All other world gold coins</li> </ul>	<p><b>WATCHES</b></p> <ul style="list-style-type: none"> <li>All Rolex watches (including Submariner, Oyster, Daydate, and Datejust)</li> <li>All Omega (including Seamaster &amp; Constellation)</li> <li>Tudor &amp; Breitling</li> <li>Mechanical (automatic &amp; wind up)</li> <li>Gold and silver pocket watches</li> <li>Military pocket watches</li> <li>No quartz / battery watches</li> </ul>	<p><b>SILVER COINS</b></p> <ul style="list-style-type: none"> <li>Australian - Crowns, Florins, Shillings, Six Pences, Three Pences, 1966 50 cent rounds</li> <li>South Africa, USA &amp; Canada</li> <li>NZ, Great Britain, Fiji</li> <li>New Guinea Shillings</li> <li>Misc Silver Coins</li> <li>All Other World silver coins</li> </ul>
	<p><b>GOLD JEWELRY</b></p> <ul style="list-style-type: none"> <li>Gold chains</li> <li>Gold bracelets</li> <li>Gold necklaces</li> <li>Worn &amp; broken gold jewelry</li> <li>Gold rings</li> <li>Bullion bars</li> <li>Nuggets &amp; alluvial gold</li> <li>Gold earrings</li> </ul>	<p><b>WORLD/AUSTRALIAN COINS</b></p> <ul style="list-style-type: none"> <li>All world coins</li> <li>Collection and accumulation</li> <li>Error and mis-strikes</li> <li>Proof sets and singles</li> <li>Trade tokens</li> <li>Discount and special purpose tokens</li> </ul>	<p><b>JEWELRY</b></p> <ul style="list-style-type: none"> <li>Rings, brooches, pearls</li> <li>Pendants and sovereign cases</li> <li>Watch chains &amp; lockets</li> <li>Gold cuff links</li> <li>Bracelets &amp; bangles</li> <li>Necklaces and all broken jewelry</li> </ul>

CASH PAID. I COME TO YOU.  
RING BRIAN ON 0401 379 401

# TALL TALES FROM THE MAROOCHY RIVER

THE MAROOCHY RIVER HAS BEEN THE SOURCE OF MANY A TALL FISHING TALE ABOUT "MONSTERS" CAUGHT FROM THE DEPTHS OF THE RIVER, PARTICULARLY AROUND THE COD HOLE.

For tens of thousands of years, the Maroochy River served as both a means of transport and an important source of food for the area, as evidenced by the huge volume of historical middens (debris from shellfish and other food) left behind by the area's Aboriginal inhabitants.

When white settlers arrived in the area, the Maroochy River served as both a means of transport and an important source of food to supplement harvested crops. Many early settlers would go on to produce professional fishermen based on the Maroochy River and likely benefitted from local knowledge inherited from the area's traditional owners.

Casting and then hauling in fishing nets, hopefully laden with fish, was a physically demanding task in the days before mechanical aids. It was also an indiscriminate activity which would often yield unexpected "monsters" along with the desired haul. Sometimes these unwanted guests were mere curios, whilst on other occasions even be shared further afield.

The exploits and adventures of fishermen on the Maroochy River would frequently be reported on by the area's local newspaper – and upon occasions might even be shared nationwide.

The following is almost entirely true; however, as it is about fishing, it has likely changed slightly with each telling that has transpired over the past 80 or so years, and may have been somewhat exaggerated in the first place.

One such instance occurred in November 1937. In what started as a very run of the mill activity, the Gill Brothers Tiny and Ike, along with Ike's son Curly, found themselves casting a net at Parsons Banks approximately 1 kilometer from Maroochydoore.

As they hauled in a large catch of tiger mullet fish, they discovered that they had also netted a large 2 ½ mtrs blue nose shark. The men subdued the unwelcome, though not entirely out of the ordinary, by using batons they kept in the boat for this very purpose.

Much to the men's chagrin, upon bringing the catch to shore they discovered that the shark's attempts to escape had torn a large hole in the net which though unsuccessful in freeing the shark, had allowed most of the tiger mullet to escape. That's how the fishermen saw the incident anyhow.

Visitors to the area, observing these events from land, would go on to offer an entirely less mundane account of what had occurred, and while the Gills spent the following three hours in the tedious task of repairing the holes in the net, a far more impressive tale would begin to grow.

The story had evolved into the tale of desperate and vicious

battle of life and death between man and shark. It detailed how Tiny had found himself inside the net with the shark chasing him from the Maroochy's murky depths. Weighed down by his wet clothing, Tiny had made a frantic scramble to shore, collapsing unscathed yet exhausted on the river bank.

But the shark wasn't done. It was then that in a moment worthy of a Jaws film, that the shark launched itself onto the beach, abandoning its natural environment to settle the score with Tiny. Heroically, Ike and Curly sprang to Tiny's defense, bravely dispatching the shark, with a hail of shillelagh strikes, the story seemed to vary somewhat from article to article.

The more balanced telling might have taken into account that such occurrences were far from uncommon and in fact had been commonplace ever since this method of netting had been developed. Still balanced facts have no real place in a good fishing story.

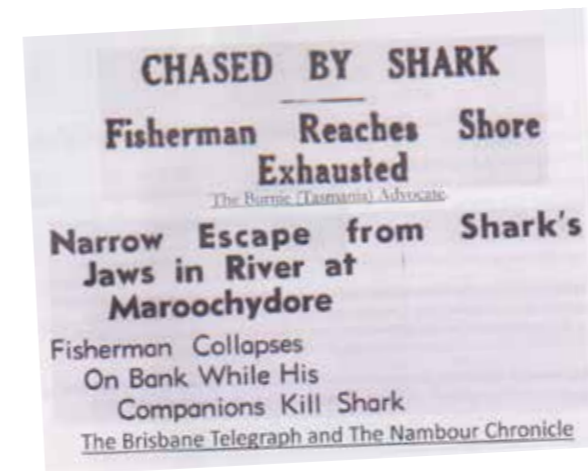
Ike Gill's grandson of Bli Bli, recalls his grandfathers' warning about swimming in the Cod Hole "Don't worry about the sharks; it'll be the groper that gets you!" There were certainly some big gropers lurking in the depths of the Cod Hole.

Years earlier in February 1932, a 200-kilogram groper was caught near Godfrey's Wharf opposite the Cod Hole. They are reported as saying they knew of another groper which lived at the entrance of Petrie Creek where it fed into the Maroochy.

Incredibly, two weeks later in the Nambour Chronicle and North Coast Advertiser, it is reported another large groper weighting 199 kilograms had been caught.

Both these gropers would have been cleaned, packed and transported to the Brisbane market, by rail, the same day they were caught. These gropers represent the largest recorded fish caught in the Maroochy River.

After the end of the WW2 the availability of surplus army trucks changed the nature of net fishing in the Maroochy River. Trucks could now replace manpower to haul the migrating fish from the surf beaches before they entered the rivers. As a consequence, fish numbers and the fishing industry in the Maroochy River declined.



Hauling nets on the Maroochy 1918  
Courtesy Picture Sunshine Coast Heritage Library.

**BLI BLI ON MAROOCHY HISTORICAL SOCIETY INC.**

Organisation No. IA 18938

Here Today ...to Collect, Preserve and Promote Local History



The School Residence was built in 1920 and is the oldest public building in Bli Bli.

Meet us at the "Former Bli Bli School Residence" 94 Willis Road, Bli Bli 2nd, 3rd, 4th and 5th Monday February to December from 9.30am to 12.30pm  
Other times are by appointment with President Ailsa Watson  
0408 544 845 / 5448 4848

All Historical Society members, guests, researchers and the public are also welcome to join us on the 1st Monday of each month in the old Church Hall located at 89 Willis Road, Bli Bli from 9.30 a.m. Refreshments provided.



# BLI BLI UNITING CHURCH

10 Lefoes Road, Bli Bli

**Sunday Church Services:**  
Morning Tea - 9am to 10am

**Worship Services:**  
Morning Tea - 10.30am to 11.30am

**Holy Communion** - 1st Sunday of Month

Everyone is warmly welcomed. Visitors are always welcome

**Café Lilac** - Ladies Coffee Morning - 1st Tuesday of month

**Craft Group** - This is in recess until further notice

**Mens Breakfast** - BBQ Breakfast at Parklakes  
- 2nd Saturday of month at 8.30am

**Weekly Bible Study** - Is in recess until 2022

**Planning & Prayer Meeting** - 1st & 3rd Saturdays at 9am at Church

**HALL & CHURCH HIRE AVAILABLE -**  
**JOHN RANKIN ON 0458 215 250**  
**MURRAY JOHNSON ON 0434 692 176**

## BLI BLI SERVICES - SUPPORTING OUR LOCALS

To advertise contact [ads@blibli.qld.au](mailto:ads@blibli.qld.au)

<p><b>A.C.G. Plumbing &amp; Excavations.</b> We're Reliable! All aspects of plumbing, drainage gas fitting &amp; free quotes. No job too big or small. Reliable, fast, friendly. <b>0414 227 471</b></p>	<p><b>Bli Bli Mechanical Repairs</b> Experienced mechanic in Blanch Cres. For all your car troubles. Ring for an appointment. Friendly service. <b>5448 6851</b></p>	<p><b>CK Design Dog Grooming</b> Professional Grooming Salon with a hand scissoring specialist. 41 Avocado Cres. <b>5448 4818</b> by appointment</p>
<p><b><a href="http://www.blibli.qld.au">www.blibli.qld.au</a></b></p>		



## WHAT IS ON IN THE OLD HALL AND THE OLD CHURCH?

The Public Hall and the Old Church is the focus of many exciting and varied activities.  
For any enquiries or bookings call 0427 635 558 or email your enquiry to [bookings@blibli.qld.au](mailto:bookings@blibli.qld.au)

### PUBLIC HALL

	MONDAY	TUESDAY	WEDNESDAY	THURSDAY	FRIDAY	SATURDAY	SUNDAY
7.00am							
8.00am							
9.00am							
10.00am							
11.00am							
12.00pm							
1.00pm							
2.00pm							
3.00pm							
4.00pm							
5.00pm							
6.00pm							
7.00pm							
8.00pm							
9.00pm							
10.00pm							
11.00pm							

<b>Bli Bli Yoga</b> Petra 0409 532 940	<b>Dance Fever</b> Sandra 0432 980 432	<b>Bli Bli Quilters</b> Liz 0408 312 713	<b>Sundance Line Dancers</b> Heather 0407 174 591	<b>Home Schooled Drama</b> Jodi jodievacook@protonmail.com Friday (School Term)	<b>Showtime Boxing</b> Sally sallymber29@gmail.com
<b>USA Zumba Class</b> Wayne 0419 669 131	<b>Sundance Line Dancers</b> Heather 0407 174 591	<b>MBK Dance Studios</b> Hayley 0408 988 119	<b>Kelly Karate</b> Simon 0408 064 439	<b>MBK Dance Studios</b> Hayley 0408 988 119	<b>GKR Karate</b> Andrew 0407 695 005
<b>MBK Dance Studios</b> Hayley 0408 988 119	<b>MBK Dance Studios</b> Hayley 0408 988 119		<b>Maroochy River Country Music Club</b> Lynda 0409 588 939		<b>Sacred Embodiment</b> Sara sara@sacredembodiment.com.au Saturday (monthly)

### OLD CHURCH

	MONDAY	TUESDAY	WEDNESDAY	THURSDAY	FRIDAY	SATURDAY	SUNDAY
7.00am							
8.00am							
9.00am							
10.00am							
11.00am							
12.00pm							
1.00pm							
2.00pm							
3.00pm							
4.00pm							
5.00pm							
6.00pm							
7.00pm							
8.00pm							
9.00pm							
10.00pm							
11.00pm							

<b>MBK Dance Studios</b> Hayley 0408 988 119	<b>Coast Life Success</b> (Connection & Mentorship Sessions for Teen Homeschoolers) Maree 0419 929 771	<b>Coast Life Success</b> (Connection & Mentorship Sessions for Teen Homeschoolers) Maree 0419 929 771	<b>Didgeridoo Music Therapy</b> Caleb 0422 805 580 5.15pm - 7.30pm	<b>Wayne Hewson Marshal Arts</b> Mark 0409 271 168	<b>Juille (Private Band Practice)</b> Julie 0457 070 131 Saturday / Fortnightly	<b>Golden Grown Healing</b> Paul 0410 974 799 Random Saturday and Sundays
<b>MBK Dance Studios</b> Hayley 0408 988 119	<b>Trudi Yoga</b> Trudi 0421 369 262	<b>Wayne Hewson Marshal Arts</b> Mark 0409 271 168	<b>Trudi Yoga</b> Trudi 0421 369 262 6pm - 7pm			
	<b>Bli Bli Community Association</b> 3rd Tuesday 7.30pm - 9.30pm Daniel 0427 635 558	<b>Church of United Spiritualism</b> Rosemary 0409 457 352				

All information is correct at the time of printing



# What's new in your area...



## RAY WHITE BLI BLI

Do your research and compare our results to the other agents in Bli Bli!

We've seen slightly more than  
**2 offers per day** across our listings in the  
 past **12 months**  
 equating to  
**\$621,277,986**  
 (over half a billion!)



Ed



Natasha



Greg



Rachel



Tony



Matthew



Cameron

Thinking of selling?

We are talking to more buyers than any other agency in Bli Bli.

Call us today - 07 5450 8111.